

Joe Lombardo
Governor

Christopher Sewell
Director



David Schmidt
Chief Economist

Media Contact:
Valentina Bonaparte
detrmedia@detr.nv.gov

For Immediate Release
April 7, 2026

DETR Releases Local Area Employment Statistics for January 2026

According to the Nevada Department of Employment, Training and Rehabilitation's ([DETR](#)) January 2026 economic report, the state's seasonally adjusted unemployment rate was 5.3 percent in January 2026 which increased by 0.1 percentage points (pp) from December.[†] Seasonally adjusted estimates account for regularly seen economic patterns, with the following estimates not seasonally adjusted.

Please note, historical statewide data has been updated as a part of an annual review. This process will be completed for local areas within the state in May. Until then, direct comparisons between state and local data should not be made, as they use a different benchmark reference.

In the three Metropolitan Statistical Areas (MSA), the unemployment rates were 5.8 percent in the Las Vegas area, 4.7 percent in Reno, and 4.6 percent in the Carson area in January 2026.

In Nevada's counties, the lowest unemployment rate was observed in Humboldt County at 3.9 percent, and Mineral County had the highest rate at 10.6 percent. For a look at the unemployment rate in your county, visit our [Area Profiles Page](#).

For the latest information on the Nevada economy including employment, unemployment, and unemployment insurance check out our monthly [Labor Market Overview](#), or to see the data on your area, take a look at our monthly [Local Area Labor Market Overview](#).

Additional information on unemployment estimates along with a complete breakout of unemployment in counties, cities, and other areas in Nevada can be found by visiting our [Local Area Unemployment Statistics](#) page. Additionally, employment estimates by industry can be found at our [Current Employment Statistics](#) page.

—###—

ABOUT THE RESEARCH AND ANALYSIS BUREAU:

The [Research and Analysis Bureau](#) is Nevada's premier source for labor market information. A part of DETR, the Bureau is responsible for creating, analyzing, and reporting Nevada's labor market information, in cooperation with the United States Bureau of Labor Statistics (BLS).

[†] Please note that January and December statistics in this report are subject to annual revision by the Bureau of Labor Statistics.

Joe Lombardo
Governor

Christopher Sewell
Director



David Schmidt
Chief Economist

Media Contact:
Valentina Bonaparte
detrmedia@detr.nv.gov

Counties and Cities Employment & Unemployment

January 2026

Published on April 7, 2026

In January 2026, the seasonally adjusted unemployment rate in Nevada increased by 0.1 percentage points (pp) compared to December 2025 and currently stands at 5.3 percent. Over the same period, the unadjusted unemployment rate ticked up by 0.1 pp, from 5.5 percent to 5.6 percent. The seasonally adjusted number of employed individuals in the state went up by 6,128, compared to December 2025.

Please note that January and December statistics in this report are subject to annual revision by the Bureau of Labor Statistics. Although historical statewide data has been updated as a part of an annual review, this process will be completed for local areas within the state in May. Until then, direct comparisons between state and local data should not be made, as they are based on different benchmark references.

At the MSA (Metropolitan Statistical Area) level, unemployment rates increased across all Nevada MSAs compared to December 2025. In the Las Vegas-Henderson-North Las Vegas MSA, the unemployment rate increased by 0.6 pp, moving from 5.2 percent in December to 5.8 percent. The Reno-Sparks MSA unemployment rate increased by 0.7 pp, changing from 4 percent to 4.7 percent. Meanwhile, the Carson City MSA unemployment rate increased by 0.6 pp, moving from 4 percent in December to 4.6 percent. These figures are not seasonally adjusted.

At the county level, all of Nevada's 16 counties and Carson City experienced an increase in unemployment rates compared to December 2025. The counties with the largest increases were Esmeralda (+2.4 pp), followed by Mineral (+1.3 pp).

Figures for state unemployment estimates come from the Local Area Unemployment Statistics (LAUS) program, a state/federal partnership sponsored by the Bureau of Labor Statistics (BLS-LAUS). This program produces monthly and annual employment, unemployment, and labor force data for census regions, states, counties, metropolitan areas, and many large cities, based on place of residence. For more information on LAUS data or for a look at estimates in your area visit our [LAUS Page](#). For a look at the economic profile of Nevada, the metropolitan areas, or your county, visit our [Area Profiles](#) page.

500 East Third Street, Room 200 • Carson City, NV 89713 • (775) 684-3911 • Fax (775) 684-3908

2800 E. St. Louis Avenue • Las Vegas, Nevada 89104 • (702) 486-7923

detr.nv.gov

U.S. & Nevada Local Area Unemployment Statistics

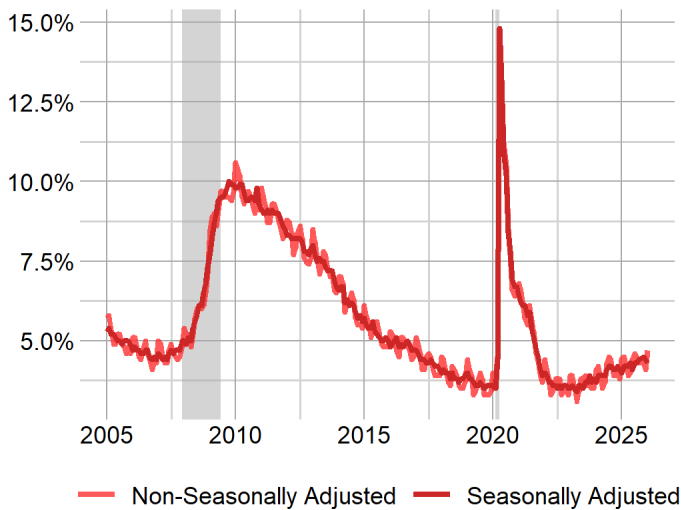
Area	Labor Force	Employed	Unemployed	Unemployment Rate	Labor Force Participation Rate	Employment Population Ratio
US						
U.S.	169,612,000	161,670,000	7,942,000	4.7	61.7	58.9
U.S. SA	170,465,000	163,097,000	7,368,000	4.3	62.1	59.4
State						
Nevada	1,699,429	1,605,080	94,349	5.6	63.8	60.2
Nevada SA	1,694,147	1,604,864	89,283	5.3	63.6	60.2

SA denotes seasonally adjusted data

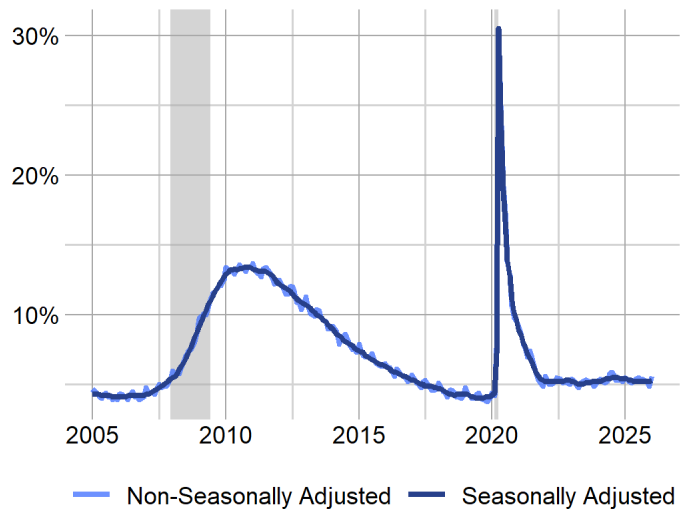
Seasonally adjusted estimates account for regularly seen seasonal employment patterns such as jobs associated with holiday hiring, holiday and weather seasons, or other jobs with seasonal components. The result of a seasonally adjusted estimate is usually a smoother estimate from which underlying economic trends can be seen. Adjusted estimates are in the summary table above, and in many of the other tables and figures throughout this document.

Nevada’s seasonally adjusted unemployment rate was 5.3 percent in January, which increased by 0.1 pp from 5.2 percent in December, and decreased by 0.1 pp from 5.4 percent in January 2025. The number of unemployed individuals increased by 1,002 from December for a current level of 89,283 people, which increased by 28 unemployed people since January 2025. The labor force in Nevada currently stands at 1,694,147, up 7,130 since December and up 38,754 since January 2025.

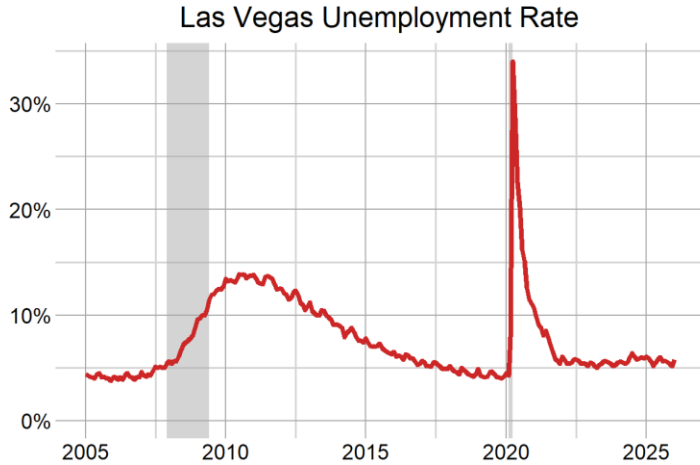
United States Unemployment Rate



Nevada Unemployment Rate

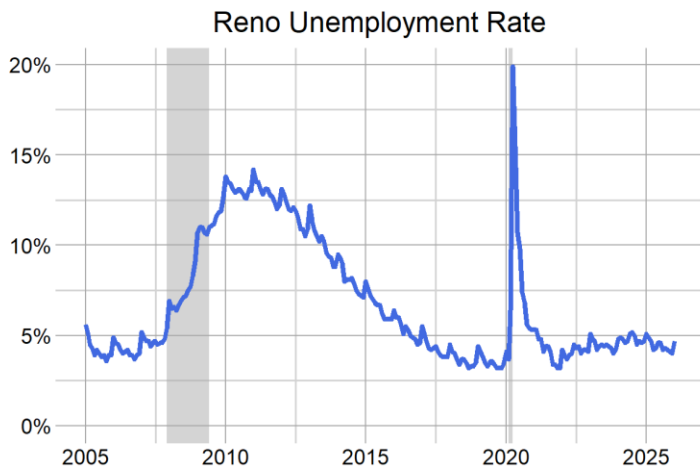


The Las Vegas Metropolitan Statistical Area's (MSA) unemployment rate was 5.8 percent in January 2026, increasing from 5.2 percent in December, and down from 6.1 percent in January 2025, not seasonally adjusted. The number of unemployed individuals increased by 7,314 since December for a current level of 73,431 people, which is 2,660 fewer unemployed people than in January 2025. The labor force in Las Vegas is currently composed of 1,259,392 people, down 5,124 from December but up 20,539 since January 2025.



Las Vegas LAUS Summary	
As of January 2026	
Unemployment Rate	
January 2026	5.8
December 2025	5.2
January 2025	6.1
Maximum Rate	34
Unemployed Individuals	
January 2026	73,431
Change Compared to December 2025	7,314
Change Compared to January 2025	-2,660
Maximum Level	367,867

The Reno MSA's unemployment rate was 4.7 percent in January 2026, increasing from 4 percent in December, and down from 5.1 percent in January 2025, not seasonally adjusted. The number of unemployed individuals increased by 1,791 since December for a current level of 14,395 people, which is 1,092 fewer unemployed people than in January 2025. The labor force in Reno is currently composed of 305,537 people, down 7,312 from December but up 1,494 since January 2025.



Reno LAUS Summary	
As of January 2026	
Unemployment Rate	
January 2026	4.7
December 2025	4
January 2025	5.1
Maximum Rate	19.9
Unemployed Individuals	
January 2026	14,395
Change Compared to December 2025	1,791
Change Compared to January 2025	-1,092
Maximum Level	52,115

The Carson City MSA’s unemployment rate was 4.6 percent in January, increasing from 4 percent in December, and down from 5 percent in January 2025, not seasonally adjusted. The number of unemployed individuals increased by 166 since December for a current level of 1,383 people, which is 109 fewer unemployed people than in January 2025. The labor force in Carson City is currently composed of 30,184 people, down 194 from December but up 250 since January 2025.



Carson City LAUS Summary	
As of January 2026	
Unemployment Rate	
January 2026	4.6
December 2025	4
January 2025	5
Maximum Rate	19.5
Unemployed Individuals	
January 2026	1,383
Change Compared to December 2025	166
Change Compared to January 2025	-109
Maximum Level	5,208

For more on the economy of your county including unemployment, employment, unemployment insurance, wages, and more visit our [Area Profiles Page](#).

Local Area Unemployment Statistics

Area		Labor Force	Employed	Unemployed	Unemployment Rate
US					
U.S.	SA	170,465,000	163,097,000	7,368,000	4.3
U.S.		169,612,000	161,670,000	7,942,000	4.7
State					
Nevada	SA	1,694,147	1,604,864	89,283	5.3
Nevada		1,699,429	1,605,080	94,349	5.6
Metropolitan Statistical Area					
Carson City, NV Metro Area		30,184	28,801	1,383	4.6
Reno-Sparks, NV Metro Area		305,537	291,142	14,395	4.7
Las Vegas-Henderson-North Las Vegas, NV Metro Area		1,259,392	1,185,961	73,431	5.8
Combined Statistical Area					
Reno-Carson City-Fernley, NV Comb. Statistical Area		372,361	354,853	17,508	4.7
Las Vegas-Henderson, NV-AZ Comb. Statistical Area		1,279,183	1,204,406	74,777	5.8
Micropolitan Statistical Area					
Winnemucca, NV Micropolitan Statistical Area		8,400	8,075	325	3.9
Elko, NV Micropolitan Statistical Area		28,534	27,383	1,151	4.0
Gardnerville Ranchos, NV-CA Micropolitan Statistical Area		25,607	24,421	1,186	4.6
Fallon, NV Micropolitan Statistical Area		11,033	10,489	544	4.9
Pahrump, NV Micropolitan Statistical Area		19,791	18,445	1,346	6.8
County					
Humboldt County		8,400	8,075	325	3.9
Elko County		27,866	26,753	1,113	4.0
Pershing County		2,331	2,229	102	4.4
Douglas County		25,014	23,867	1,147	4.6
Washoe County		273,388	260,683	12,705	4.6
Carson City		30,184	28,801	1,383	4.6
White Pine County		3,688	3,514	174	4.7
Lander County		2,507	2,387	120	4.8
Churchill County		11,033	10,489	544	4.9
Lyon County		30,425	28,841	1,584	5.2
Lincoln County		1,702	1,607	95	5.6
Eureka County		668	630	38	5.7
Clark County		1,259,392	1,185,961	73,431	5.8
Storey County		1,724	1,618	106	6.1
Nye County		19,791	18,445	1,346	6.8
Esmeralda County		275	251	24	8.7
Mineral County		1,038	928	110	10.6
City					
Elko City*		11,220	10,787	433	3.9
Reno		156,573	149,475	7,098	4.5
Sparks		60,622	57,907	2,715	4.5
Carson City		30,184	28,801	1,383	4.6
Fernley City*		13,378	12,748	630	4.7
Mesquite*		8,423	8,002	421	5.0
Henderson		179,146	169,102	10,044	5.6
Boulder City*		6,558	6,187	371	5.7
Las Vegas		350,680	330,117	20,563	5.9
North Las Vegas		149,676	140,389	9,287	6.2

*State Specific Areas, not endorsed or published by the BLS

SA denotes seasonally adjusted data

500 East Third Street, Room 200 • Carson City, NV 89713 • (775) 684-3911 • Fax (775) 684-3908

2800 E. St. Louis Avenue • Las Vegas, Nevada 89104 • (702) 486-7923

detr.nv.gov

Unemployment Insurance Benefits

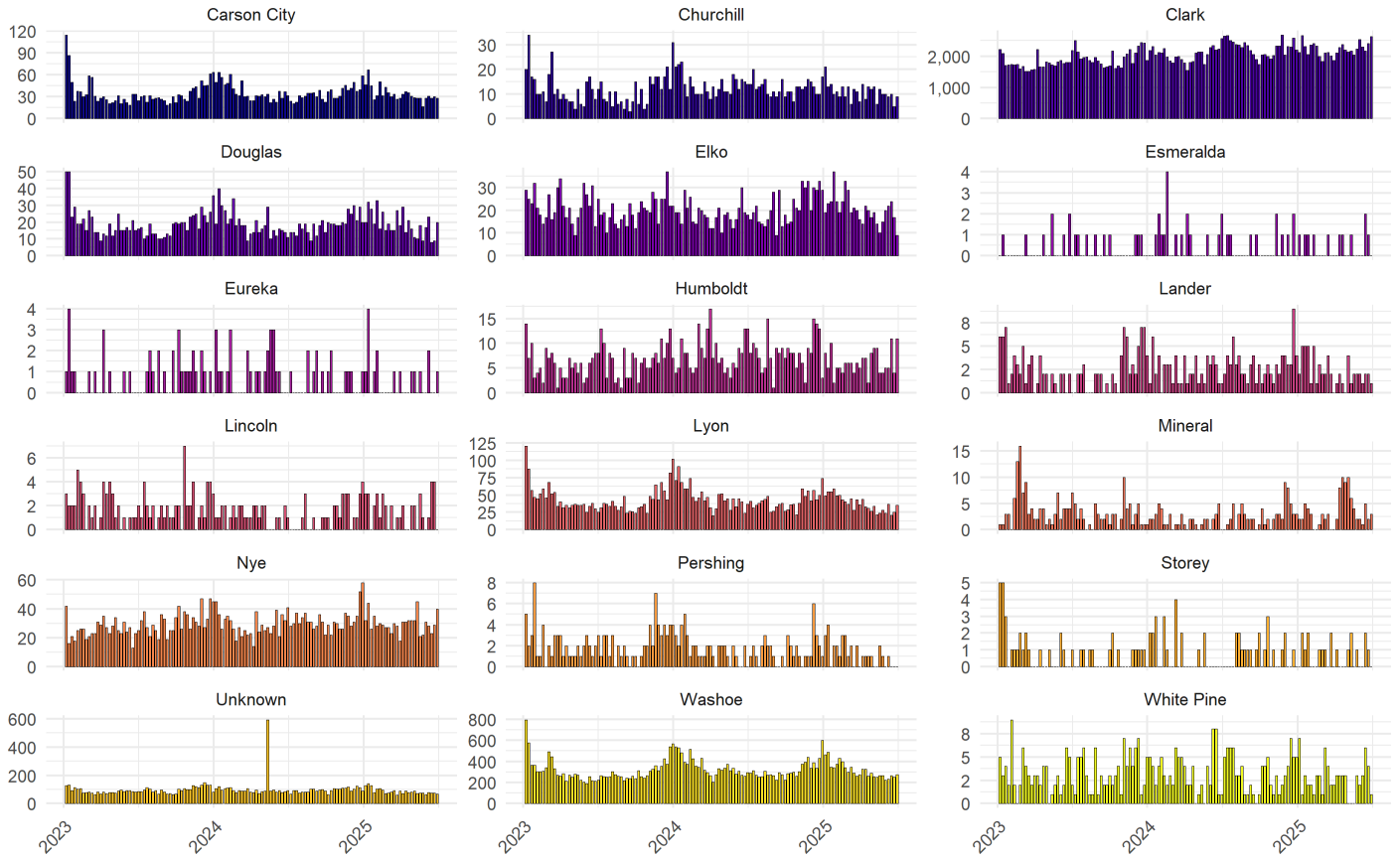
In January 2026, 12,926 initial claims for unemployment insurance were filed in Nevada, representing a decrease of 926 claims, or -6.7 percent, from December 2025 when there were 13,852 claims. However, this is an increase of 124 claims, or 1 percent, from January 2025 when there were 12,802 initial claims.

January 2026 Unemployment Insurance Activity

Measure	January 2026	January 2025	% change	December 2025	% change	12-month average
Initial Claims	12,926	12,802	1.0%	13,852	-6.7%	11,875
Weeks Claimed	117,100	105,552	10.9%	121,859	-3.9%	111,499
Weeks Compensated	105,496	99,223	6.3%	125,331	-15.8%	98,095
Amount Compensated	\$50,892,781	\$46,573,551	9.3%	\$60,749,591	-16.2%	\$46,006,889
Weeks Compensated Total Unemployment	93,437	88,710	5.3%	112,142	-16.7%	87,232
Amount Compensated Total Unemployment	\$47,526,158	\$43,627,220	8.9%	\$56,937,854	-16.5%	\$42,974,843
First Payments	7,775	7,175	8.4%	8,417	-7.6%	6,148
Final Payments (Exhaustions)	2,884	2,360	22.2%	2,924	-1.4%	2,454
Average Weekly Benefit	\$508.64	\$491.80	3.4%	\$507.73	0.2%	\$492.11
Average Duration (in weeks)	14.19	15.09	-5.9%	14.24	-0.4%	14.65
Exhaustion Rate	42.56%	41.67%	2.1%	41.04%	3.7%	41.96%

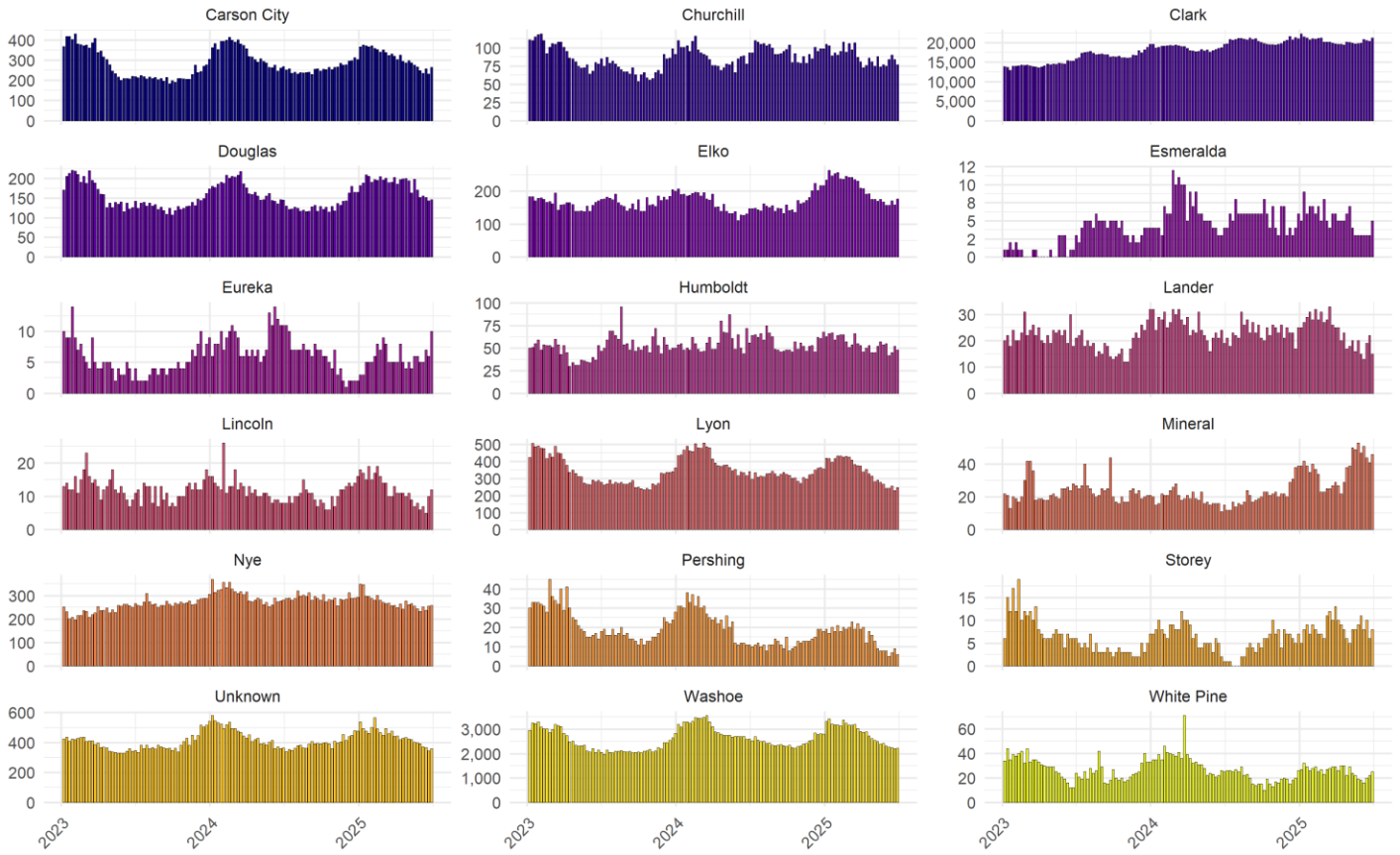
Source: ETA 5159

Initial Claims by County
 weekly claim totals since January 2023



Source: DETR Internal Reporting

Continued Claims by County
 weekly claim totals since January 2023



Source: DETR Internal Reporting
 Figure 11

Unemployment Rate Summary LAUS

Area		January 2026	December 2025	Jan - Dec	January 2025	Yearly Change
US						
U.S.	SA	4.3	4.4	-0.1	4.0	0.3
U.S.		4.7	4.1	0.6	4.4	0.3
State						
Nevada	SA	5.3	5.2	0.1	5.4	-0.1
Nevada		5.6	4.9	0.7	5.5	0.1
Metropolitan Statistical Area						
Carson City, NV Metro Area		4.6	4.0	0.6	5.0	-0.4
Reno-Sparks, NV Metro Area		4.7	4.0	0.7	5.1	-0.4
Las Vegas-Henderson-North Las Vegas, NV Metro Area		5.8	5.2	0.6	6.1	-0.3
Combined Statistical Area						
Reno-Carson City-Fernley, NV Comb. Statistical Area		4.7	4.0	0.7	5.1	-0.4
Las Vegas-Henderson, NV-AZ Comb. Statistical Area		5.8	5.2	0.6	6.2	-0.4
Micropolitan Statistical Area						
Winnemucca, NV Micropolitan Statistical Area		3.9	3.6	0.3	4.4	-0.5
Elko, NV Micropolitan Statistical Area		4.0	3.6	0.4	4.5	-0.5
Gardnerville Ranchos, NV-CA Micropolitan Statistical Area		4.6	4.1	0.5	5.2	-0.6
Fallon, NV Micropolitan Statistical Area		4.9	4.1	0.8	5.0	-0.1
Pahrump, NV Micropolitan Statistical Area		6.8	6.2	0.6	7.6	-0.8
County						
Humboldt County		3.9	3.6	0.3	4.4	-0.5
Elko County		4.0	3.6	0.4	4.5	-0.5
Pershing County		4.4	3.5	0.9	5.1	-0.7
Douglas County		4.6	4.1	0.5	5.2	-0.6
Washoe County		4.6	4.0	0.6	5.0	-0.4
Carson City		4.6	4.0	0.6	5.0	-0.4
White Pine County		4.7	3.6	1.1	4.5	0.2
Lander County		4.8	4.2	0.6	5.9	-1.1
Churchill County		4.9	4.1	0.8	5.0	-0.1
Lyon County		5.2	4.4	0.8	5.7	-0.5
Lincoln County		5.6	4.5	1.1	5.8	-0.2
Eureka County		5.7	4.5	1.2	6.7	-1.0
Clark County		5.8	5.2	0.6	6.1	-0.3
Storey County		6.1	5.2	0.9	6.2	-0.1
Nye County		6.8	6.2	0.6	7.6	-0.8
Esmeralda County		8.7	6.3	2.4	9.7	-1.0
Mineral County		10.6	9.3	1.3	11.4	-0.8
City						
Elko City*		3.9	3.5	0.4	4.3	-0.4
Reno		4.5	3.9	0.6	4.9	-0.4
Sparks		4.5	3.8	0.7	4.9	-0.4
Carson City		4.6	4.0	0.6	5.0	-0.4
Fernley City*		4.7	3.9	0.8	4.9	-0.2
Mesquite*		5.0	4.5	0.5	5.6	-0.6
Henderson		5.6	5.0	0.6	5.9	-0.3
Boulder City*		5.7	4.9	0.8	6.3	-0.6
Las Vegas		5.9	5.3	0.6	6.2	-0.3
North Las Vegas		6.2	5.6	0.6	6.5	-0.3

* State Specific Areas, not endorsed or published by the BLS
SA denotes seasonally adjusted data

500 East Third Street, Room 200 • Carson City, NV 89713 • (775) 684-3911 • Fax (775) 684-3908

2800 E. St. Louis Avenue • Las Vegas, Nevada 89104 • (702) 486-7923

detr.nv.gov

Labor Force Levels Summary LAUS

Area	January 2026	December 2025	Jan - Dec	January 2025	Yearly Change
US					
U.S.	169,612,000	170,723,000	-1,111,000	169,814,000	-202,000
U.S. SA	170,465,000	171,495,000	-1,030,000	170,696,000	-231,000
State					
Nevada	1,699,429	1,698,730	699	1,653,610	45,819
Nevada SA	1,694,147	1,687,017	7,130	1,655,393	38,754
Metropolitan Statistical Area					
Carson City, NV Metro Area	30,184	30,378	-194	29,934	250
Las Vegas-Henderson-North Las Vegas, NV Metro Area	1,259,392	1,264,516	-5,124	1,238,853	20,539
Reno-Sparks, NV Metro Area	305,537	312,849	-7,312	304,043	1,494
Combined Statistical Area					
Las Vegas-Henderson, NV-AZ Comb. Statistical Area	1,279,183	1,284,061	-4,878	1,258,076	21,107
Reno-Carson City-Fernley, NV Comb. Statistical Area	372,361	380,313	-7,952	368,964	3,397
Micropolitan Statistical Area					
Elko, NV Micropolitan Statistical Area	28,534	29,134	-600	28,059	475
Fallon, NV Micropolitan Statistical Area	11,033	11,513	-480	10,657	376
Gardnerville Ranchos, NV-CA Micropolitan Statistical Area	25,607	25,573	34	24,330	1,277
Pahrump, NV Micropolitan Statistical Area	19,791	19,545	246	19,223	568
Winnemucca, NV Micropolitan Statistical Area	8,400	8,782	-382	8,148	252
County					
Churchill County	11,033	11,513	-480	10,657	376
Clark County	1,259,392	1,264,516	-5,124	1,238,853	20,539
Douglas County	25,014	25,082	-68	23,781	1,233
Elko County	27,866	28,404	-538	27,391	475
Esmeralda County	275	319	-44	279	-4
Eureka County	668	730	-62	668	0
Humboldt County	8,400	8,782	-382	8,148	252
Lander County	2,507	2,547	-40	2,441	66
Lincoln County	1,702	1,870	-168	1,716	-14
Lyon County	30,425	31,316	-891	30,332	93
Mineral County	1,038	1,080	-42	1,151	-113
Nye County	19,791	19,545	246	19,223	568
Pershing County	2,331	2,463	-132	2,212	119
Storey County	1,724	1,816	-92	1,770	-46
Washoe County	273,388	279,717	-6,329	271,941	1,447
White Pine County	3,688	3,881	-193	3,665	23
Carson City	30,184	30,378	-194	29,934	250
City					
Fernley City*	13,378	13,607	-229	13,130	248
Boulder City*	6,558	6,657	-99	6,555	3
Carson City	30,184	30,378	-194	29,934	250
Elko City*	11,220	11,442	-222	11,015	205
Henderson	179,146	178,000	1,146	174,277	4,869
Las Vegas	350,680	352,122	-1,442	344,809	5,871
Mesquite*	8,423	8,390	33	8,240	183
North Las Vegas	149,676	149,478	198	146,393	3,283
Reno	156,573	159,354	-2,781	154,798	1,775
Sparks	60,622	62,486	-1,864	60,782	-160

* State Specific Areas, not endorsed or published by the BLS
SA denotes seasonally adjusted data

500 East Third Street, Room 200 • Carson City, NV 89713 • (775) 684-3911 • Fax (775) 684-3908

2800 E. St. Louis Avenue • Las Vegas, Nevada 89104 • (702) 486-7923

detr.nv.gov

Employed Individuals Levels Summary LAUS

Area	January 2026	December 2025	Jan - Dec	January 2025	Yearly Change
US					
U.S.	161,670,000	163,720,000	-2,050,000	162,347,000	-677,000
U.S. SA	163,097,000	163,992,000	-895,000	163,831,000	-734,000
State					
Nevada	1,605,080	1,615,051	-9,971	1,562,349	42,731
Nevada SA	1,604,864	1,598,736	6,128	1,566,138	38,726
Metropolitan Statistical Area					
Carson City, NV Metro Area	28,801	29,161	-360	28,442	359
Las Vegas-Henderson-North Las Vegas, NV Metro Area	1,185,961	1,198,399	-12,438	1,162,762	23,199
Reno-Sparks, NV Metro Area	291,142	300,245	-9,103	288,556	2,586
Combined Statistical Area					
Las Vegas-Henderson, NV-AZ Comb. Statistical Area	1,204,406	1,216,739	-12,333	1,180,521	23,885
Reno-Carson City-Fernley, NV Comb. Statistical Area	354,853	364,968	-10,115	350,173	4,680
Micropolitan Statistical Area					
Elko, NV Micropolitan Statistical Area	27,383	28,080	-697	26,786	597
Fallon, NV Micropolitan Statistical Area	10,489	11,046	-557	10,122	367
Gardnerville Ranchos, NV-CA Micropolitan Statistical Area	24,421	24,516	-95	23,053	1,368
Pahrump, NV Micropolitan Statistical Area	18,445	18,340	105	17,759	686
Winnemucca, NV Micropolitan Statistical Area	8,075	8,464	-389	7,789	286
County					
Churchill County	10,489	11,046	-557	10,122	367
Clark County	1,185,961	1,198,399	-12,438	1,162,762	23,199
Douglas County	23,867	24,060	-193	22,542	1,325
Elko County	26,753	27,383	-630	26,163	590
Esmeralda County	251	299	-48	252	-1
Eureka County	630	697	-67	623	7
Humboldt County	8,075	8,464	-389	7,789	286
Lander County	2,387	2,439	-52	2,298	89
Lincoln County	1,607	1,785	-178	1,616	-9
Lyon County	28,841	29,951	-1,110	28,593	248
Mineral County	928	980	-52	1,020	-92
Nye County	18,445	18,340	105	17,759	686
Pershing County	2,229	2,378	-149	2,100	129
Storey County	1,618	1,721	-103	1,660	-42
Washoe County	260,683	268,573	-7,890	258,303	2,380
White Pine County	3,514	3,742	-228	3,500	14
Carson City	28,801	29,161	-360	28,442	359
City					
Fernley City*	12,748	13,075	-327	12,482	266
Boulder City*	6,187	6,333	-146	6,145	42
Carson City	28,801	29,161	-360	28,442	359
Elko City*	10,787	11,036	-249	10,544	243
Henderson	169,102	169,049	53	164,022	5,080
Las Vegas	330,117	333,397	-3,280	323,483	6,634
Mesquite*	8,002	8,015	-13	7,777	225
North Las Vegas	140,389	141,056	-667	136,862	3,527
Reno	149,475	153,076	-3,601	147,223	2,252
Sparks	57,907	60,116	-2,209	57,817	90

* State Specific Areas, not endorsed or published by the BLS
SA denotes seasonally adjusted data

Unemployed Individuals Levels Summary LAUS

Area	January 2026	December 2025	Jan - Dec	January 2025	Yearly Change
US					
U.S.	7,942,000	7,003,000	939,000	7,467,000	475,000
U.S. SA	7,368,000	7,503,000	-135,000	6,865,000	503,000
State					
Nevada	94,349	83,679	10,670	91,261	3,088
Nevada SA	89,283	88,281	1,002	89,255	28
Metropolitan Statistical Area					
Carson City, NV Metro Area	1,383	1,217	166	1,492	-109
Las Vegas-Henderson-North Las Vegas, NV Metro Area	73,431	66,117	7,314	76,091	-2,660
Reno-Sparks, NV Metro Area	14,395	12,604	1,791	15,487	-1,092
Combined Statistical Area					
Las Vegas-Henderson, NV-AZ Comb. Statistical Area	74,777	67,322	7,455	77,555	-2,778
Reno-Carson City-Fernley, NV Comb. Statistical Area	17,508	15,345	2,163	18,791	-1,283
Micropolitan Statistical Area					
Elko, NV Micropolitan Statistical Area	1,151	1,054	97	1,273	-122
Fallon, NV Micropolitan Statistical Area	544	467	77	535	9
Gardnerville Ranchos, NV-CA Micropolitan Statistical Area	1,186	1,057	129	1,277	-91
Pahrump, NV Micropolitan Statistical Area	1,346	1,205	141	1,464	-118
Winnemucca, NV Micropolitan Statistical Area	325	318	7	359	-34
County					
Churchill County	544	467	77	535	9
Clark County	73,431	66,117	7,314	76,091	-2,660
Douglas County	1,147	1,022	125	1,239	-92
Elko County	1,113	1,021	92	1,228	-115
Esmeralda County	24	20	4	27	-3
Eureka County	38	33	5	45	-7
Humboldt County	325	318	7	359	-34
Lander County	120	108	12	143	-23
Lincoln County	95	85	10	100	-5
Lyon County	1,584	1,365	219	1,739	-155
Mineral County	110	100	10	131	-21
Nye County	1,346	1,205	141	1,464	-118
Pershing County	102	85	17	112	-10
Storey County	106	95	11	110	-4
Washoe County	12,705	11,144	1,561	13,638	-933
White Pine County	174	139	35	165	9
Carson City	1,383	1,217	166	1,492	-109
City					
Fernley City*	630	532	98	648	-18
Boulder City*	371	324	47	410	-39
Carson City	1,383	1,217	166	1,492	-109
Elko City*	433	406	27	471	-38
Henderson	10,044	8,951	1,093	10,255	-211
Las Vegas	20,563	18,725	1,838	21,326	-763
Mesquite*	421	375	46	463	-42
North Las Vegas	9,287	8,422	865	9,531	-244
Reno	7,098	6,278	820	7,575	-477
Sparks	2,715	2,370	345	2,965	-250

* State Specific Areas, not endorsed or published by the BLS
SA denotes seasonally adjusted data

500 East Third Street, Room 200 • Carson City, NV 89713 • (775) 684-3911 • Fax (775) 684-3908

2800 E. St. Louis Avenue • Las Vegas, Nevada 89104 • (702) 486-7923

detr.nv.gov

End Notes

Prepared by the Research and Analysis Bureau with contributions from: Bhraman Gulati, Antonio Solorio, Marianne Kattenhorn, Dionny McDonnell, James Bathgate, Dave Schmidt, Andrew Stencel, and Tim Wilcox.

Special thanks to all the R and RStudio developers that built the packages to make this possible. Packages used in this report include tidyverse, DBI, tidyquant, data.table, scales, gt, kableExtra, ggthemes, cowplot, gridExtra, RcppRoll, viridis, fiftystater, ggforce, knitr, flexdashboard, lubridate, plotly, patchwork, reshape2.

This workforce product was funded by the Workforce Information Grant awarded by the U.S. Department of Labor's Employment and Training Administration. The product was created by the recipient and does not necessarily reflect the official position of the U.S. Department of Labor. The U.S. Department of Labor makes no guarantees, warranties, or assurances of any kind, express or implied, with respect to such information, including any information on linked sites and including, but not limited to, accuracy of the information or its completeness, timeliness, usefulness, adequacy, continued availability, or ownership. This product is copyrighted by the institution that created it. Internal use by an organization and/or personal use by an individual for non-commercial purposes is permissible. All other uses require the prior authorization of the copyright owner.