

**MEDIA CONTACT**  
VALENTINA  
BONAPARTE  
[detrmedia@detr.nv.gov](mailto:detrmedia@detr.nv.gov)



**JOE LOMBARDO**  
GOVERNOR  
**CHRISTOPHER SEWELL**  
DIRECTOR  
**DAVID SCHMIDT**  
CHIEF ECONOMIST

## Counties and Cities Employment & Unemployment

July 2024

Published on August 20, 2024

In July 2024, the seasonally adjusted unemployment rate in Nevada increased by 0.2 percentage points from 5.2 percent to 5.4 percent. The unadjusted rate went up by 0.3 percentage points from 6 percent to 6.3 percent. The number of employed individuals in the state went down by 838.

At the MSA (Metropolitan Statistical Area) level, the state saw an increase in unemployment rate in all three of its MSAs. In the Las Vegas - Paradise MSA, the state saw an increase of unemployment rate equivalent to 0.5 percentage points, moving from 6.2 percent to 6.7 percent. The Carson City MSA saw an increase of 0.1 percentage points, going from 5.4 percent to 5.5 percent. The Reno - Sparks MSA saw an increase of 0.1 percent from 5 percent to 5.1 percent. These figures are not adjusted for seasonality.

At the county level, the state saw increases in unemployment rate in nearly all its counties. The only counties that saw a decrease were Eureka and Pershing, which saw decreases of 0.4 percentage points and 0.2 percentage points, respectively. The counties with the highest increases were Esmeralda and Nye, with increases of 1.2 and 0.6 percentage points, respectively.

Figures for state unemployment estimates come from the Local Area Unemployment Statistics (LAUS) program, a state/federal partnership sponsored by the Bureau of Labor Statistics (BLS-LAUS). This program produces monthly and annual employment, unemployment, and labor force data for census regions, states, counties, metropolitan areas, and many large cities, based on place of residence. For more on LAUS data or for a look at estimates in your area visit our [LAUS Page](#), and for a look that the economic profile of Nevada, the metropolitan areas, or your county visit our [Area Profiles](#) Page.

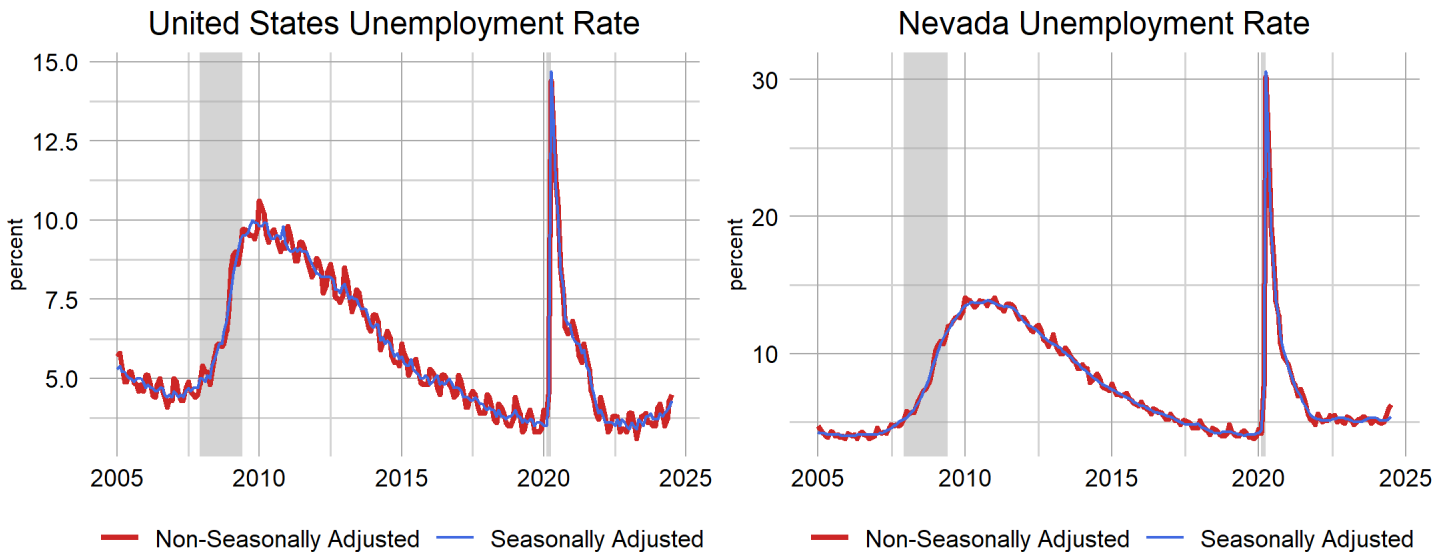
## U.S. & Nevada Local Area Unemployment Statistics

Area	Labor Force	Employed	Unemployed	Unemployment Rate	Labor Force Participation Rate	Employment Population Ratio
<b>US</b>						
U.S.	169,723,000	162,038,000	7,685,000	4.5	63.2	60.3
U.S. SA	168,429,000	161,266,000	7,163,000	4.3	62.7	60.0
<b>State</b>						
Nevada	1,627,861	1,524,706	103,155	6.3	63.0	59.0
Nevada SA	1,620,441	1,532,318	88,123	5.4	62.7	59.3

SA denotes seasonally adjusted data

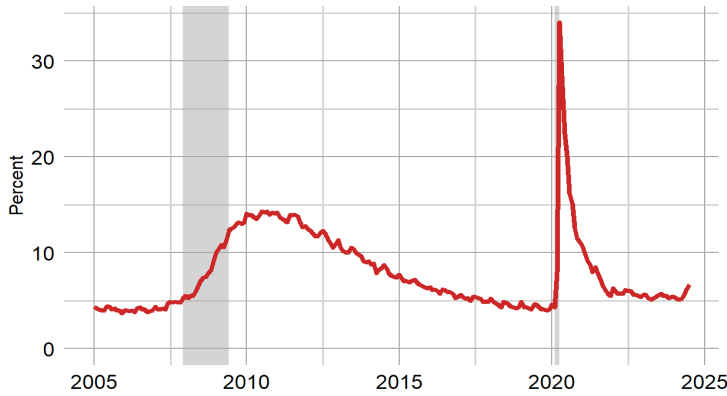
Seasonally adjusted estimates account for regularly seen seasonal employment patterns such as jobs associated with holiday hiring, holiday and weather seasons, or other jobs with seasonal components. The result of a seasonally adjusted estimate is usually a smoother estimate from which underlying economic trends can be seen. Adjusted estimates are in the summary table above, and in many of the other tables and figures throughout this document.

Nevada’s seasonally adjusted unemployment rate was 5.4 percent in July, which increased by 0.2 from 5.2 percent in June, and increased by 0.4 from 5 percent in 2023. The number of unemployed individuals increased by 3,449 from June for a current level of 88,123 people, which increased by 7,614 unemployed people since 2023. The labor force in Nevada is currently 1,620,441 people, which has increased by 2,611 people from June, and increased by 16,594 people since 2023.



The Las Vegas Metropolitan Statistical Area’s (MSA)s unemployment rate was 6.7 percent in July 2024, increasing from 6.2 percent in June 2024, and up from 5.6 percent in July 2023, non-seasonally adjusted. The number of unemployed individuals increase by 5,866 since June 2024 for a current level of 80,470 people, which is 14,502 more unemployed people than July 2023. The labor force in Las Vegas is currently 1,210,040 people, which is 7,794 more people than June 2024, and is up 21,796 people since July 2023.

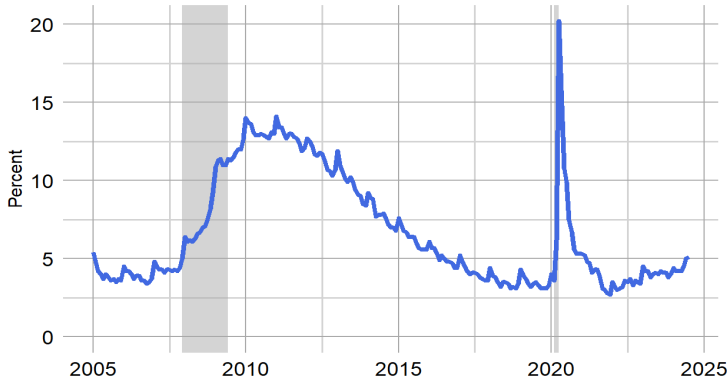
Las Vegas Unemployment Rate



Las Vegas LAUS Summary	
<b>Unemployment Rate</b>	
Unemployment Rate	6.7
Previous Month	6.2
Previous Year	5.6
Maximum Rate	34
<b>Unemployed Individuals</b>	
Unemployment Level	80,470
Monthly Change	5,866
Annual Change	14,502
Maximum Level	369,106

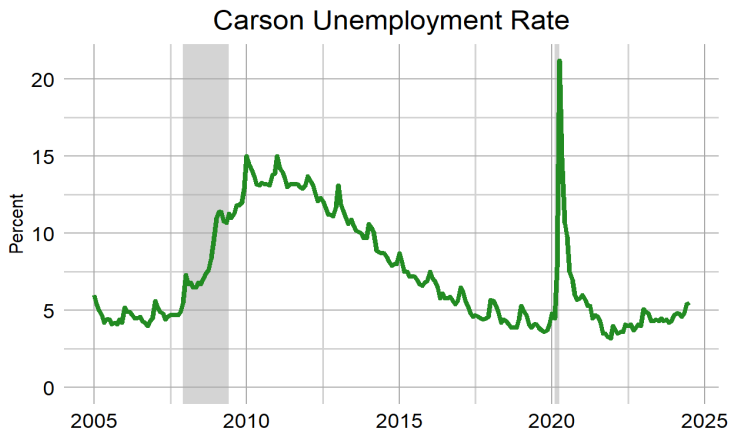
The Reno MSA’s unemployment rate was 5.1 percent in July 2024, increasing from 5 percent in June 2024, and up from 4 percent in July 2023, non-seasonally adjusted. The number of unemployed individuals increase by 349 since June 2024 for a current level of 13,715 people, which is 3,004 more unemployed people than July 2023. The labor force in Reno is currently 266,782 people, which is 645 less people than June 2024, and is up 1,169 people since July 2023.

Reno Unemployment Rate



Reno LAUS Summary	
<b>Unemployment Rate</b>	
Unemployment Rate	5.1
Previous Month	5
Previous Year	4
Maximum Rate	20.2
<b>Unemployed Individuals</b>	
Unemployment Level	13,715
Monthly Change	349
Annual Change	3,004
Maximum Level	47,792

The Carson City MSA’s unemployment rate was 5.5 percent in July 2024, increasing from 5.4 percent in June 2024, and up from 4.3 percent in July 2023, non-seasonally adjusted. The number of unemployed individuals increased by 28 since June 2024 for a current level of 1,442 people, which is 302 more unemployed people than July 2023. The labor force in Carson City is currently 26,367 people, which is 33 more people than June 2024, and is up 46 people since July 2023.



Carson City LAUS Summary	
<b>Unemployment Rate</b>	
Unemployment Rate	5.5
Previous Month	5.4
Previous Year	4.3
Maximum Rate	21.2
<b>Unemployed Individuals</b>	
Unemployment Level	1,442
Monthly Change	28
Annual Change	302
Maximum Level	5,191

For more on the economy of your county including unemployment, employment, unemployment insurance, wages, and more visit our [Area Profiles Page](#).

## Local Area Unemployment Statistics

Area		Labor Force	Employed	Unemployed	Unemployment Rate
<b>US</b>					
U.S.	SA	168,429,000	161,266,000	7,163,000	4.3
U.S.		169,723,000	162,038,000	7,685,000	4.5
<b>State</b>					
Nevada	SA	1,620,441	1,532,318	88,123	5.4
Nevada		1,627,861	1,524,706	103,155	6.3
<b>Metropolitan Statistical Area</b>					
Reno - Sparks MSA		266,782	253,067	13,715	5.1
Carson City MSA		26,367	24,925	1,442	5.5
Las Vegas - Paradise MSA		1,210,040	1,129,570	80,470	6.7
<b>Combined Statistical Area</b>					
Reno-Carson City-Fernley, Nv Combined Statistical Area		339,818	321,725	18,093	5.3
<b>County</b>					
White Pine County		4,695	4,491	204	4.3
Lander County		3,158	3,017	141	4.5
Elko County		25,897	24,636	1,261	4.9
Washoe County		264,622	251,022	13,600	5.1
Storey County		2,160	2,045	115	5.3
Humboldt County		7,454	7,048	406	5.4
Douglas County		23,150	21,885	1,265	5.5
Carson City		26,367	24,925	1,442	5.5
Churchill County		10,906	10,279	627	5.7
Pershing County		2,238	2,107	131	5.9
Lincoln County		1,930	1,814	116	6.0
Eureka County		829	775	54	6.5
Clark County		1,210,040	1,129,570	80,470	6.7
Esmeralda County		413	385	28	6.8
Lyon County		23,519	21,848	1,671	7.1
Mineral County		1,550	1,440	110	7.1
Nye County		18,932	17,418	1,514	8.0
<b>Labor Market Area</b>					
Elko Micropolitan Area		26,726	25,411	1,315	4.9
Winnemucca Micropolitan Area		7,454	7,048	406	5.4
Gardnerville Micropolitan Area		23,150	21,885	1,265	5.5
Fallon Micropolitan Area		10,906	10,279	627	5.7
Fernley Micropolitan Area		23,519	21,848	1,671	7.1
Pahrump Micropolitan Area		18,932	17,418	1,514	8.0
<b>City</b>					
Elko City*		10,120	9,608	512	5.1
Reno		144,086	136,532	7,554	5.2
Sparks		59,463	56,399	3,064	5.2
Mesquite*		8,731	8,235	496	5.7
Boulder City*		7,966	7,484	482	6.1
Henderson		178,264	167,108	11,156	6.3
Las Vegas		333,481	311,056	22,425	6.7
Fernley City*		8,884	8,229	655	7.4
North Las Vegas		126,484	116,634	9,850	7.8

\*State Specific Areas, not endorsed or published by the BLS

SA denotes seasonally adjusted data

The cities of Boulder City, Elko, Fernley, and Mesquite are state specific areas. These estimates are not endorsed or published by the BLS.

## Unemployment Insurance Benefits

Turning to our monthly data, in July 2024, 13,195 initial claims for unemployment insurance were filed in Nevada, an increase of 1,532 claims, or 13.1 percentage points, from June 2024 when there were 11,663 claims. This figure is an increase from the 11,023 figure that was observed in June of 2023.

### July 2024 Unemployment Insurance Activity

Measure	July 2024	July 2023	% change	June 2024	% change	12 month average
Initial Claims	13,195	11,023	19.7%	11,663	13.1%	11,162
Weeks Claimed	105,024	97,893	7.3%	103,266	1.7%	95,587
Weeks Compensated	104,731	87,427	19.8%	79,036	32.5%	86,862
Amount Compensated	\$47,694,640	\$37,031,085	28.8%	\$36,077,109	32.2%	\$39,700,019
Weeks Compensated Total Unemployment	96,090	79,483	20.9%	72,750	32.1%	79,582
Amount Compensated Total Unemployment	\$45,340,485	\$35,010,390	29.5%	\$34,402,413	31.8%	\$37,747,741
First Payments	6,524	6,441	1.3%	4,740	37.6%	5,419
Final Payments (Exhaustions)	2,733	1,910	43.1%	2,106	29.8%	2,064
Average Weekly Benefit	\$471.85	\$440.48	7.1%	\$472.89	-0.2%	\$473.37
Average Duration (in weeks)	14.69	11.85	23.9%	14.45	1.6%	13.22
Exhaustion Rate	37.86%	33.37%	13.4%	37.20%	1.8%	34.70%

Source: ETA 5159

Looking to our measures of unemployment insurance activity, final payments were up across the state. First payments also saw an increase over the month. In Clark County, for example, first payments increased by 1,646 up to 5,413 or a percentage increase of 43.7 percentage points. Final payments increased by 494 up to 2,208 or a percentage increase of 28.8 percentage points. Washoe County saw an increase in first payments, with first payments going up by 60 from 553 to 613. Final payments in Washoe County were up by 122 from 208 to 330. Carson City experienced an increase in first payments moving from 40 to 52 or an increase of 12. Final payments in Carson City were up 8, moving from 26 to 34. Statewide, the Weeks Compensated increased by 25,274 or 32.6 percentage points over the month. Benefit Payments made increased by approximately \$11.48 million or 32.3 percentage points.

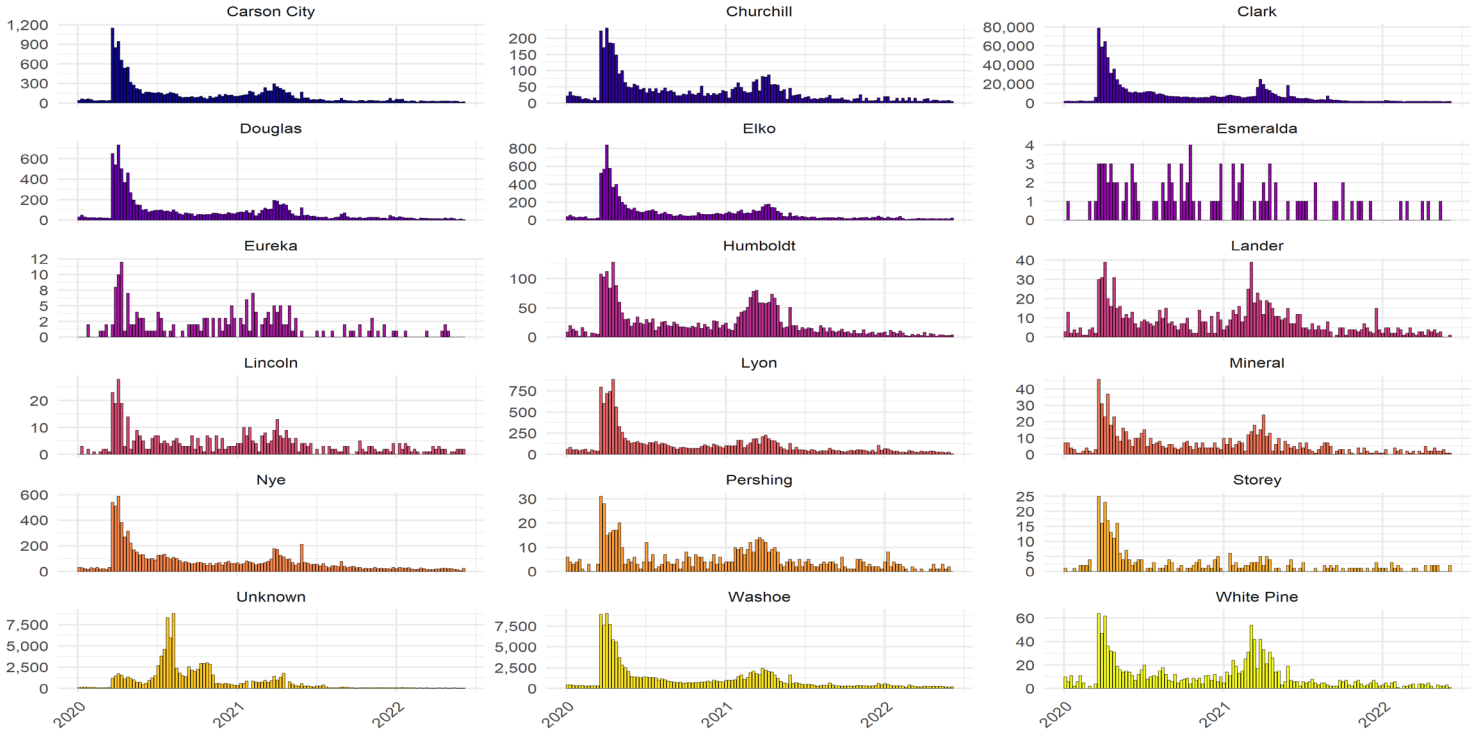
## UI Claims Activity by County

July 2024

County	First Payments	Final Payments	Weeks Compensated	Benefit Payments	Average Weekly Benefit	
Carson City	52	34	1,000	\$449,898	\$449.90	
Churchill	22	7	383	\$168,844	\$440.85	
Clark	5,413	2,208	83,962	\$38,044,961	\$453.12	
Douglas	27	20	502	\$244,472	\$487.00	
Elko	49	10	624	\$286,358	\$458.91	
Esmeralda	4	0	37	\$19,589	\$529.43	
Eureka	0	1	38	\$20,440	\$537.89	
Humboldt	18	2	245	\$110,438	\$450.77	
Lander	3	1	80	\$43,685	\$546.06	
Lincoln	2	0	47	\$24,476	\$520.77	
Lyon	68	32	1,158	\$571,075	\$493.16	
Mineral	3	0	49	\$22,123	\$451.49	
Nye	61	35	1,057	\$468,942	\$443.65	
Pershing	1	1	28	\$12,472	\$445.43	
Storey	0	1	2	\$862	\$431.00	
Unknown	148	97	2,771	\$1,396,846	\$504.09	
Washoe	613	330	10,642	\$5,072,940	\$476.69	
White Pine	6	4	130	\$55,389	\$426.07	
<b>Statewide</b>	—	6,490	2,783	102,755	47,013,810	—

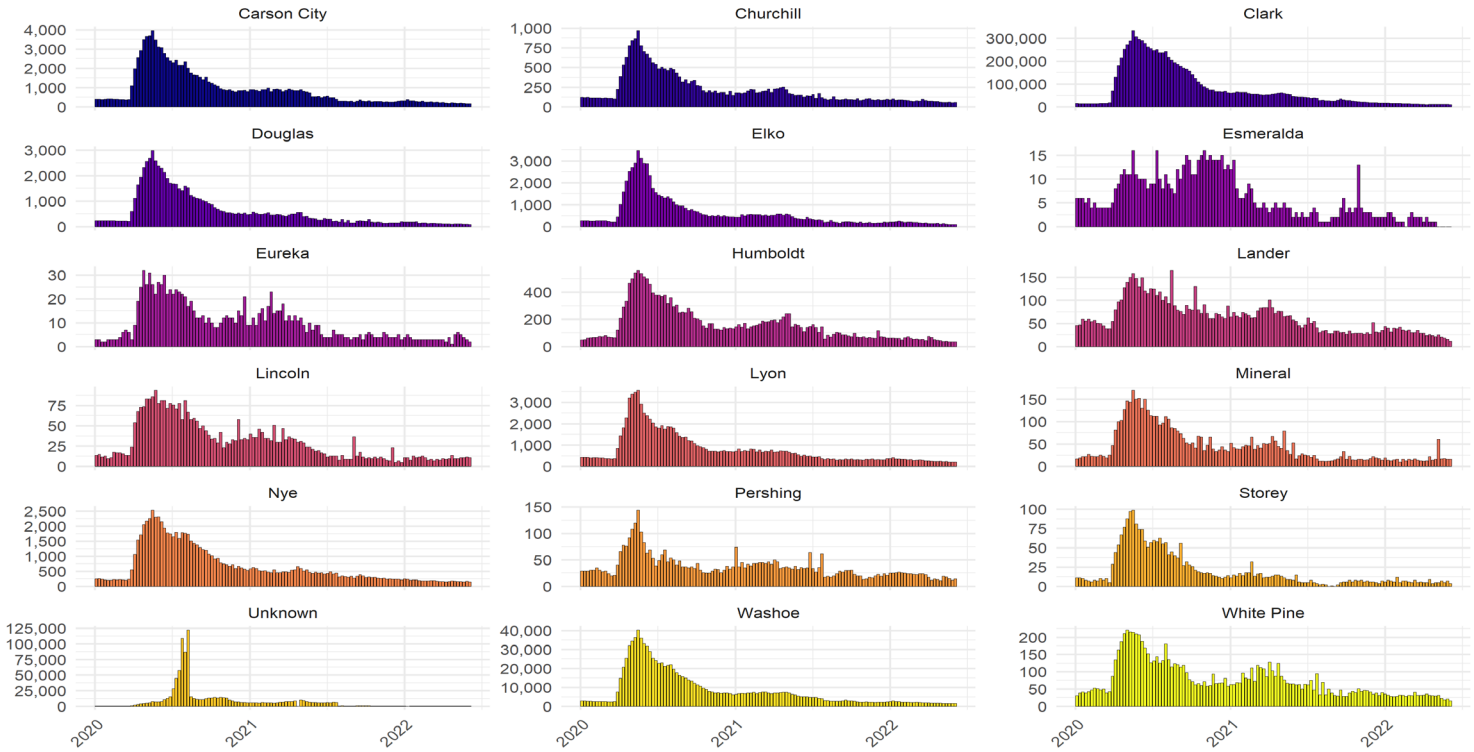
Source: DETR Internal Reporting

**Initial Claims by County**  
weekly claim totals since January 2020



Source: DETR Internal Reporting

**Continued Claims by County**  
weekly claim totals since January 2020



Source: DETR Internal Reporting  
Figure 11



## Unemployment Rate Summary LAUS

Area		July 2024	June 2024	Monthly Change	July 2023	Yearly Change
<b>US</b>						
U.S.	SA	4.3	4.1	0.2	3.5	0.8
U.S.		4.5	4.3	0.2	3.8	0.7
<b>State</b>						
Nevada	SA	5.4	5.2	0.2	5.0	0.4
Nevada		6.3	6.0	0.3	5.2	1.1
<b>Metropolitan Statistical Area</b>						
Reno - Sparks MSA		5.1	5.0	0.1	4.0	1.1
Carson City MSA		5.5	5.4	0.1	4.3	1.2
Las Vegas - Paradise MSA		6.7	6.2	0.5	5.6	1.1
<b>Combined Statistical Area</b>						
Reno-Carson City-Fernley, Nv Combined Statistical Area		5.3	5.2	0.1	4.2	1.1
<b>County</b>						
White Pine County		4.3	4.1	0.2	3.4	0.9
Lander County		4.5	4.3	0.2	3.9	0.6
Elko County		4.9	4.7	0.2	4.2	0.7
Washoe County		5.1	5.0	0.1	4.0	1.1
Storey County		5.3	5.2	0.1	4.0	1.3
Humboldt County		5.4	5.3	0.1	4.5	0.9
Douglas County		5.5	5.4	0.1	4.3	1.2
Carson City		5.5	5.4	0.1	4.3	1.2
Churchill County		5.7	5.4	0.3	4.6	1.1
Pershing County		5.9	6.1	-0.2	4.9	1.0
Lincoln County		6.0	5.8	0.2	5.1	0.9
Eureka County		6.5	6.9	-0.4	4.0	2.5
Clark County		6.7	6.2	0.5	5.6	1.1
Esmeralda County		6.8	5.6	1.2	4.4	2.4
Lyon County		7.1	6.8	0.3	5.7	1.4
Mineral County		7.1	6.9	0.2	7.0	0.1
Nye County		8.0	7.4	0.6	6.3	1.7
<b>Labor Market Area</b>						
Elko Micropolitan Area		4.9	4.8	0.1	4.2	0.7
Winnemucca Micropolitan Area		5.4	5.3	0.1	4.5	0.9
Gardnerville Micropolitan Area		5.5	5.4	0.1	4.3	1.2
Fallon Micropolitan Area		5.7	5.4	0.3	4.6	1.1
Fernley Micropolitan Area		7.1	6.8	0.3	5.7	1.4
Pahrump Micropolitan Area		8.0	7.4	0.6	6.3	1.7
<b>City</b>						
Elko City*		5.1	4.8	0.3	4.4	0.7
Reno		5.2	5.1	0.1	4.1	1.1
Sparks		5.2	5.0	0.2	3.9	1.3
Mesquite*		5.7	5.5	0.2	4.1	1.6
Boulder City*		6.1	5.8	0.3	5.0	1.1
Henderson		6.3	5.8	0.5	5.0	1.3
Las Vegas		6.7	6.3	0.4	5.7	1.0
Fernley City*		7.4	7.0	0.4	5.9	1.5
North Las Vegas		7.8	7.4	0.4	6.6	1.2

\* State Specific Areas, not endorsed or published by the BLS

SA denotes seasonally adjusted data

## Labor Force Levels Summary LAUS

Area	July 2024	June 2024	Monthly Change	July 2023	Yearly Change
<b>US</b>					
U.S.	169,723,000	169,007,000	716,000	168,354,000	1,369,000
U.S. SA	168,429,000	168,009,000	420,000	167,103,000	1,326,000
<b>State</b>					
Nevada	1,627,861	1,620,399	7,462	1,604,164	23,697
Nevada SA	1,620,441	1,617,830	2,611	1,603,847	16,594
<b>Metropolitan Statistical Area</b>					
Carson City MSA	26,367	26,334	33	26,321	46
Las Vegas - Paradise MSA	1,210,040	1,202,246	7,794	1,188,244	21,796
Reno - Sparks MSA	266,782	267,427	-645	265,613	1,169
<b>Combined Statistical Area</b>					
Reno-Carson City-Fernley, Nv Combined Statistical Area	339,818	340,272	-454	338,437	1,381
<b>County</b>					
Churchill County	10,906	10,901	5	10,841	65
Clark County	1,210,040	1,202,246	7,794	1,188,244	21,796
Douglas County	23,150	22,913	237	23,066	84
Elko County	25,897	25,908	-11	25,993	-96
Esmeralda County	413	408	5	436	-23
Eureka County	829	842	-13	846	-17
Humboldt County	7,454	7,345	109	7,571	-117
Lander County	3,158	3,146	12	3,105	53
Lincoln County	1,930	1,950	-20	1,956	-26
Lyon County	23,519	23,598	-79	23,437	82
Mineral County	1,550	1,556	-6	1,518	32
Nye County	18,932	18,931	1	18,321	611
Pershing County	2,238	2,229	9	2,245	-7
Storey County	2,160	2,167	-7	2,143	17
Washoe County	264,622	265,260	-638	263,470	1,152
White Pine County	4,695	4,666	29	4,649	46
Carson City	26,367	26,334	33	26,321	46
<b>Labor Market Area</b>					
Elko Micropolitan Area	26,726	26,750	-24	26,839	-113
Fallon Micropolitan Area	10,906	10,901	5	10,841	65
Fernley Micropolitan Area	23,519	23,598	-79	23,437	82
Gardnerville Micropolitan Area	23,150	22,913	237	23,066	84
Pahrump Micropolitan Area	18,932	18,931	1	18,321	611
Winnemucca Micropolitan Area	7,454	7,345	109	7,571	-117
<b>City</b>					
Fernley City*	8,884	8,908	-24	8,847	37
Boulder City*	7,966	7,936	30	7,830	136
Elko City*	10,120	10,116	4	10,161	-41
Henderson	178,264	177,188	1,076	174,827	3,437
Las Vegas	333,481	331,464	2,017	327,705	5,776
Mesquite*	8,731	8,696	35	8,535	196
North Las Vegas	126,484	125,759	725	124,074	2,410
Reno	144,086	144,389	-303	143,475	611
Sparks	59,463	59,616	-153	59,137	326

\* State Specific Areas, not endorsed or published by the BLS

SA denotes seasonally adjusted data

## Employed Individuals Levels Summary LAUS

Area	July 2024	June 2024	Monthly Change	July 2023	Yearly Change
<b>US</b>					
U.S.	162,038,000	161,774,000	264,000	161,982,000	56,000
U.S. SA	161,266,000	161,199,000	67,000	161,262,000	4,000
<b>State</b>					
Nevada	1,524,706	1,523,811	895	1,520,299	4,407
Nevada SA	1,532,318	1,533,156	-838	1,523,338	8,980
<b>Metropolitan Statistical Area</b>					
Carson City MSA	24,925	24,920	5	25,181	-256
Las Vegas - Paradise MSA	1,129,570	1,127,642	1,928	1,122,276	7,294
Reno - Sparks MSA	253,067	254,061	-994	254,902	-1,835
<b>Combined Statistical Area</b>					
Reno-Carson City-Fernley, Nv Combined Statistical Area	321,725	322,642	-917	324,262	-2,537
<b>County</b>					
Churchill County	10,279	10,315	-36	10,344	-65
Clark County	1,129,570	1,127,642	1,928	1,122,276	7,294
Douglas County	21,885	21,679	206	22,075	-190
Elko County	24,636	24,685	-49	24,913	-277
Esmeralda County	385	385	0	417	-32
Eureka County	775	784	-9	812	-37
Humboldt County	7,048	6,957	91	7,234	-186
Lander County	3,017	3,011	6	2,985	32
Lincoln County	1,814	1,836	-22	1,856	-42
Lyon County	21,848	21,982	-134	22,104	-256
Mineral County	1,440	1,448	-8	1,412	28
Nye County	17,418	17,538	-120	17,162	256
Pershing County	2,107	2,093	14	2,134	-27
Storey County	2,045	2,054	-9	2,057	-12
Washoe County	251,022	252,007	-985	252,845	-1,823
White Pine County	4,491	4,475	16	4,491	0
Carson City	24,925	24,920	5	25,181	-256
<b>Labor Market Area</b>					
Elko Micropolitan Area	25,411	25,469	-58	25,725	-314
Fallon Micropolitan Area	10,279	10,315	-36	10,344	-65
Fernley Micropolitan Area	21,848	21,982	-134	22,104	-256
Gardnerville Micropolitan Area	21,885	21,679	206	22,075	-190
Pahrump Micropolitan Area	17,418	17,538	-120	17,162	256
Winnemucca Micropolitan Area	7,048	6,957	91	7,234	-186
<b>City</b>					
Fernley City*	8,229	8,280	-51	8,326	-97
Boulder City*	7,484	7,472	12	7,436	48
Elko City*	9,608	9,627	-19	9,716	-108
Henderson	167,108	166,823	285	166,029	1,079
Las Vegas	311,056	310,525	531	309,047	2,009
Mesquite*	8,235	8,221	14	8,182	53
North Las Vegas	116,634	116,434	200	115,880	754
Reno	136,532	137,068	-536	137,524	-992
Sparks	56,399	56,620	-221	56,808	-409

\* State Specific Areas, not endorsed or published by the BLS

SA denotes seasonally adjusted data

## Unemployed Individuals Levels Summary LAUS

Area	July 2024	June 2024	Monthly Change	July 2023	Yearly Change
<b>US</b>					
U.S.	7,685,000	7,233,000	452,000	6,372,000	1,313,000
U.S. SA	7,163,000	6,811,000	352,000	5,841,000	1,322,000
<b>State</b>					
Nevada	103,155	96,588	6,567	83,865	19,290
Nevada SA	88,123	84,674	3,449	80,509	7,614
<b>Metropolitan Statistical Area</b>					
Carson City MSA	1,442	1,414	28	1,140	302
Las Vegas - Paradise MSA	80,470	74,604	5,866	65,968	14,502
Reno - Sparks MSA	13,715	13,366	349	10,711	3,004
<b>Combined Statistical Area</b>					
Reno-Carson City-Fernley, Nv Combined Statistical Area	18,093	17,630	463	14,175	3,918
<b>County</b>					
Churchill County	627	586	41	497	130
Clark County	80,470	74,604	5,866	65,968	14,502
Douglas County	1,265	1,234	31	991	274
Elko County	1,261	1,223	38	1,080	181
Esmeralda County	28	23	5	19	9
Eureka County	54	58	-4	34	20
Humboldt County	406	388	18	337	69
Lander County	141	135	6	120	21
Lincoln County	116	114	2	100	16
Lyon County	1,671	1,616	55	1,333	338
Mineral County	110	108	2	106	4
Nye County	1,514	1,393	121	1,159	355
Pershing County	131	136	-5	111	20
Storey County	115	113	2	86	29
Washoe County	13,600	13,253	347	10,625	2,975
White Pine County	204	191	13	158	46
Carson City	1,442	1,414	28	1,140	302
<b>Labor Market Area</b>					
Elko Micropolitan Area	1,315	1,281	34	1,114	201
Fallon Micropolitan Area	627	586	41	497	130
Fernley Micropolitan Area	1,671	1,616	55	1,333	338
Gardnerville Micropolitan Area	1,265	1,234	31	991	274
Pahrump Micropolitan Area	1,514	1,393	121	1,159	355
Winnemucca Micropolitan Area	406	388	18	337	69
<b>City</b>					
Fernley City*	655	628	27	521	134
Boulder City*	482	464	18	394	88
Elko City*	512	489	23	445	67
Henderson	11,156	10,365	791	8,798	2,358
Las Vegas	22,425	20,939	1,486	18,658	3,767
Mesquite*	496	475	21	353	143
North Las Vegas	9,850	9,325	525	8,194	1,656
Reno	7,554	7,321	233	5,951	1,603
Sparks	3,064	2,996	68	2,329	735

\* State Specific Areas, not endorsed or published by the BLS

SA denotes seasonally adjusted data

## End Notes

Prepared by the Research and Analysis Bureau with contributions from: Jordan Ambrose, Benjamin Albrecht, Bharman Gulati, Marianne Kattenhorn, Dionny McDonnell, Dave Schmidt, Antonio Solorio, and Tim Wilcox.

Special thanks to all the R and RStudio developers that built the packages to make this possible. Packages used in this report include tidyverse, DBI, tidyquant, data.table, scales, gt, kableExtra, ggthemes, cowplot, gridExtra, RcppRoll, viridis, fiftystater, ggforce, knitr, flexdashboard, lubridate, plotly, patchwork, reshape2.

This workforce product was funded by the Workforce Information Grant awarded by the U.S. Department of Labor's Employment and Training Administration. The product was created by the recipient and does not necessarily reflect the official position of the U.S. Department of Labor. The U.S. Department of Labor makes no guarantees, warranties, or assurances of any kind, express or implied, with respect to such information, including any information on linked sites and including, but not limited to, accuracy of the information or its completeness, timeliness, usefulness, adequacy, continued availability, or ownership. This product is copyrighted by the institution that created it. Internal use by an organization and/or personal use by an individual for non-commercial purposes is permissible. All other uses require the prior authorization of the copyright owner.