

MEDIA CONTACT
VALENTINA
BONAPARTE
detrmedia@detr.nv.gov



JOE LOMBARDO
GOVERNOR
CHRISTOPHER SEWELL
DIRECTOR
DAVID SCHMIDT
CHIEF ECONOMIST

Counties and Cities Employment & Unemployment

May 2024

Published on June 25, 2024

In May 2024, the seasonally adjusted unemployment rate in Nevada was unchanged and still sits at 5.1 percent. The unadjusted rate went up by 0.4 percentage points from 5 percent to 5.4 percent. The number of employed individuals in the state went up by 148.

At the MSA (Metropolitan Statistical Area) level, the state saw an increase in unemployment rate in all three of its MSAs. In the Las Vegas - Paradise MSA, there was an increase of 0.4 percentage points from 5.2 percent to 5.6 percent. In the Reno - Sparks MSA there was an increase of 0.3 percentage points from 4.2 percent to 4.5 percent, and in the Carson City MSA, there was an increase 0.2 percentage points from 4.6 percent to 4.8 percent.

At the county level, the state saw increases in unemployment rate in all of its counties besides Esmeralda County, which saw a decrease of 0.3 percentage points from 5.7 percent to 5.4 percent. The largest increases were seen in Churchill, Storey, and Lincoln County with increases of 0.6 percentage points, 0.5 percentage points, and 0.5 percentage points, respectively.

Figures for state unemployment estimates come from the Local Area Unemployment Statistics (LAUS) program, a state/federal partnership sponsored by the Bureau of Labor Statistics (BLS-LAUS). This program produces monthly and annual employment, unemployment, and labor force data for census regions, states, counties, metropolitan areas, and many large cities, based on place of residence. For more on LAUS data or for a look at estimates in your area visit our [LAUS Page](#), and for a look that the economic profile of Nevada, the metropolitan areas, or your county visit our [Area Profiles](#) Page.

U.S. & Nevada Local Area Unemployment Statistics

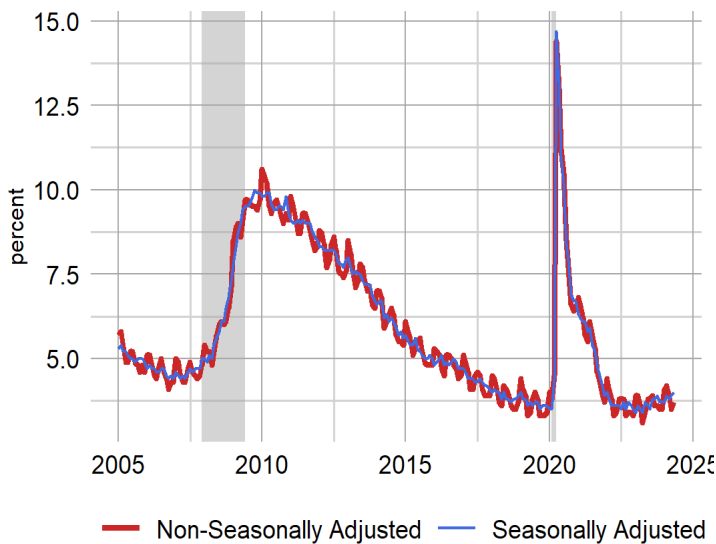
Area	Labor Force	Employed	Unemployed	Unemployment Rate	Labor Force Participation Rate	Employment Population Ratio
US						
U.S.	167,576,000	161,341,000	6,235,000	3.7	62.5	60.1
U.S. SA	167,732,000	161,083,000	6,649,000	4.0	62.5	60.1
State						
Nevada	1,619,694	1,532,970	86,724	5.4	62.8	59.4
Nevada SA	1,616,237	1,533,457	82,780	5.1	62.7	59.5

SA denotes seasonally adjusted data

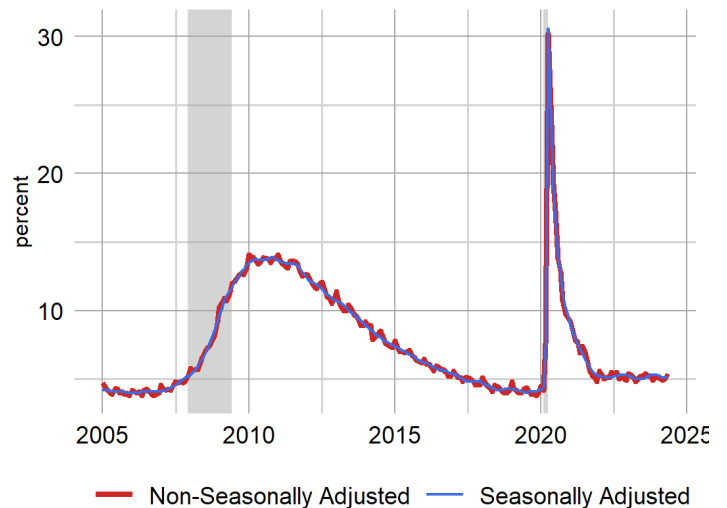
Seasonally adjusted estimates account for regularly seen seasonal employment patterns such as jobs associated with holiday hiring, holiday and weather seasons, or other jobs with seasonal components. The result of a seasonally adjusted estimate is usually a smoother estimate from which underlying economic trends can be seen. Adjusted estimates are in the summary table above, and in many of the other tables and figures throughout this document.

Nevada’s seasonally adjusted unemployment rate was 5.1 percent in May, which was unchanged from 5.1 percent in April, and increased by 0.1 pp from 5 percent in 2023. The number of unemployed individuals increased by 659 from April to a current level of 82,780 people, which increased by 3,630 unemployed people since May 2023. The labor force in Nevada is currently 1,616,237 people, which has increased by 807 people from April, and increased by 18,127 people since May 2023.

United States Unemployment Rate

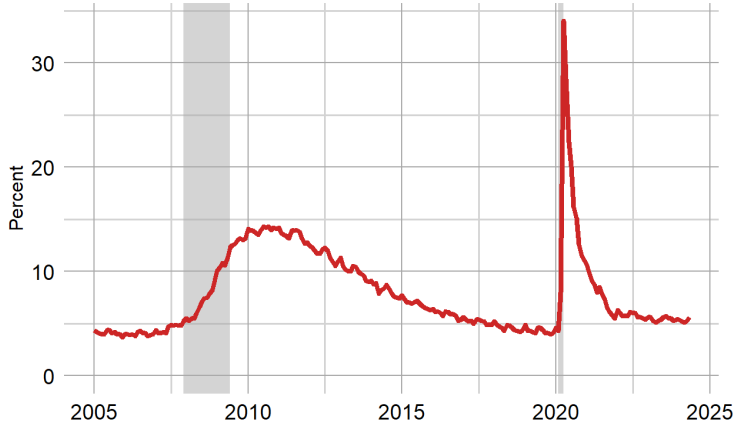


Nevada Unemployment Rate



The Las Vegas Metropolitan Statistical Area’s (MSA)s unemployment rate was 5.6 percent in May 2024, increasing from 5.2 percent in April 2024, and up from 5.3 percent in May 2023, non-seasonally adjusted. The number of unemployed individuals increased by 4,820 since April 2024 for a current level of 67,004 people, which is 3,725 more unemployed people than May 2023. The labor force in Las Vegas is currently 1,203,466 people, which is 2,130 more people than April 2024, and is up 20,414 people since May 2023.

Las Vegas Unemployment Rate

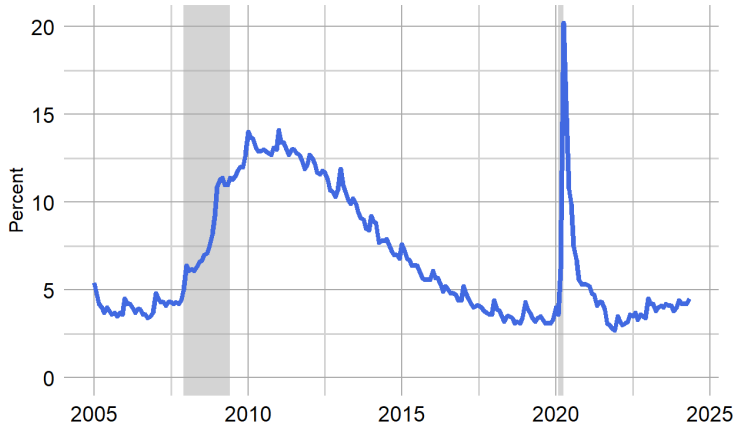


Las Vegas LAUS Summary

Unemployment Rate	
Unemployment Rate	5.6
Previous Month	5.2
Previous Year	5.3
Maximum Rate	34
Unemployed Individuals	
Unemployment Level	67,004
Monthly Change	4,820
Annual Change	3,725
Maximum Level	369,106

The Reno MSA’s unemployment rate was 4.5 percent in May 2024, increasing from 4.2 percent in April 2024, and up from 4 percent in May 2023, non-seasonally adjusted. The number of unemployed individuals increased by 872 since April 2024 to a current level of 11,994 people, which is 1,417 more unemployed people than May 2023. The labor force in Reno is currently 266,281 people, which is 85 less people than April 2024, and is up 199 people since May 2023.

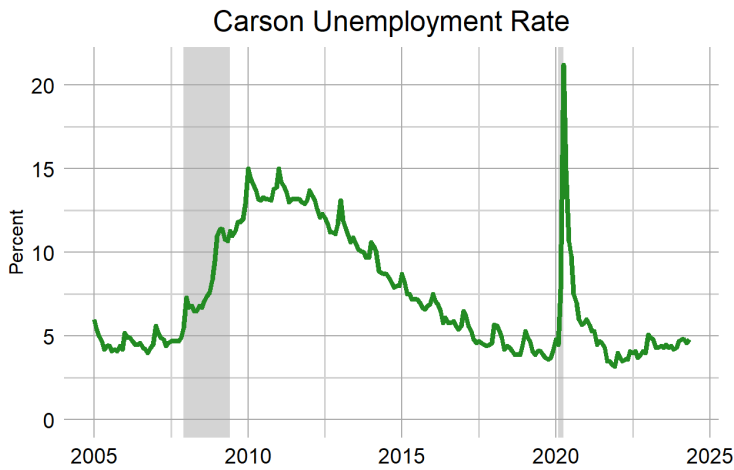
Reno Unemployment Rate



Reno LAUS Summary

Unemployment Rate	
Unemployment Rate	4.5
Previous Month	4.2
Previous Year	4
Maximum Rate	20.2
Unemployed Individuals	
Unemployment Level	11,994
Monthly Change	872
Annual Change	1,417
Maximum Level	47,792

The Carson City MSA’s unemployment rate was 4.8 percent in May 2024, increasing from 4.6 percent in April 2024, and up from 4.3 percent in May 2023, non-seasonally adjusted. The number of unemployed individuals increased by 63 since April 2024 to a current level of 1,261 people, which is 142 more unemployed people than May 2023. The labor force in Carson City is currently 26,102 people, which is 30 more people than April 2024, and is up 107 people since May 2023.



Carson City LAUS Summary	
Unemployment Rate	
Unemployment Rate	4.8
Previous Month	4.6
Previous Year	4.3
Maximum Rate	21.2
Unemployed Individuals	
Unemployment Level	1,261
Monthly Change	63
Annual Change	142
Maximum Level	5,191

For more on the economy of your county including unemployment, employment, unemployment insurance, wages, and more visit our [Area Profiles Page](#).

Local Area Unemployment Statistics

Area	Labor Force	Employed	Unemployed	Unemployment Rate
US				
U.S.	167,576,000	161,341,000	6,235,000	3.7
U.S. SA	167,732,000	161,083,000	6,649,000	4.0
State				
Nevada SA	1,616,237	1,533,457	82,780	5.1
Nevada	1,619,694	1,532,970	86,724	5.4
Metropolitan Statistical Area				
Reno - Sparks MSA	266,281	254,287	11,994	4.5
Carson City MSA	26,102	24,841	1,261	4.8
Las Vegas - Paradise MSA	1,203,466	1,136,462	67,004	5.6
Combined Statistical Area				
Reno-Carson City-Fernley, Nv Combined Statistical Area	338,395	322,563	15,832	4.7
County				
Lander County	3,120	3,003	117	3.8
White Pine County	4,590	4,416	174	3.8
Elko County	25,744	24,684	1,060	4.1
Washoe County	264,122	252,232	11,890	4.5
Humboldt County	7,486	7,141	345	4.6
Churchill County	10,949	10,438	511	4.7
Storey County	2,159	2,055	104	4.8
Carson City	26,102	24,841	1,261	4.8
Douglas County	22,519	21,421	1,098	4.9
Eureka County	891	846	45	5.1
Lincoln County	1,960	1,859	101	5.2
Esmeralda County	448	424	24	5.4
Pershing County	2,273	2,151	122	5.4
Clark County	1,203,466	1,136,462	67,004	5.6
Lyon County	23,493	22,014	1,479	6.3
Mineral County	1,534	1,433	101	6.6
Nye County	18,842	17,552	1,290	6.8
Labor Market Area				
Elko Micropolitan Area	26,635	25,530	1,105	4.1
Winnemucca Micropolitan Area	7,486	7,141	345	4.6
Fallon Micropolitan Area	10,949	10,438	511	4.7
Gardnerville Micropolitan Area	22,519	21,421	1,098	4.9
Fernley Micropolitan Area	23,493	22,014	1,479	6.3
Pahrump Micropolitan Area	18,842	17,552	1,290	6.8
City				
Elko City*	10,050	9,627	423	4.2
Reno	143,777	137,190	6,587	4.6
Sparks	59,373	56,670	2,703	4.6
Mesquite*	8,721	8,286	435	5.0
Henderson	177,422	168,128	9,294	5.2
Boulder City*	7,955	7,530	425	5.3
Las Vegas	331,693	312,953	18,740	5.6
North Las Vegas	125,604	117,345	8,259	6.6
Fernley City*	8,883	8,292	591	6.7

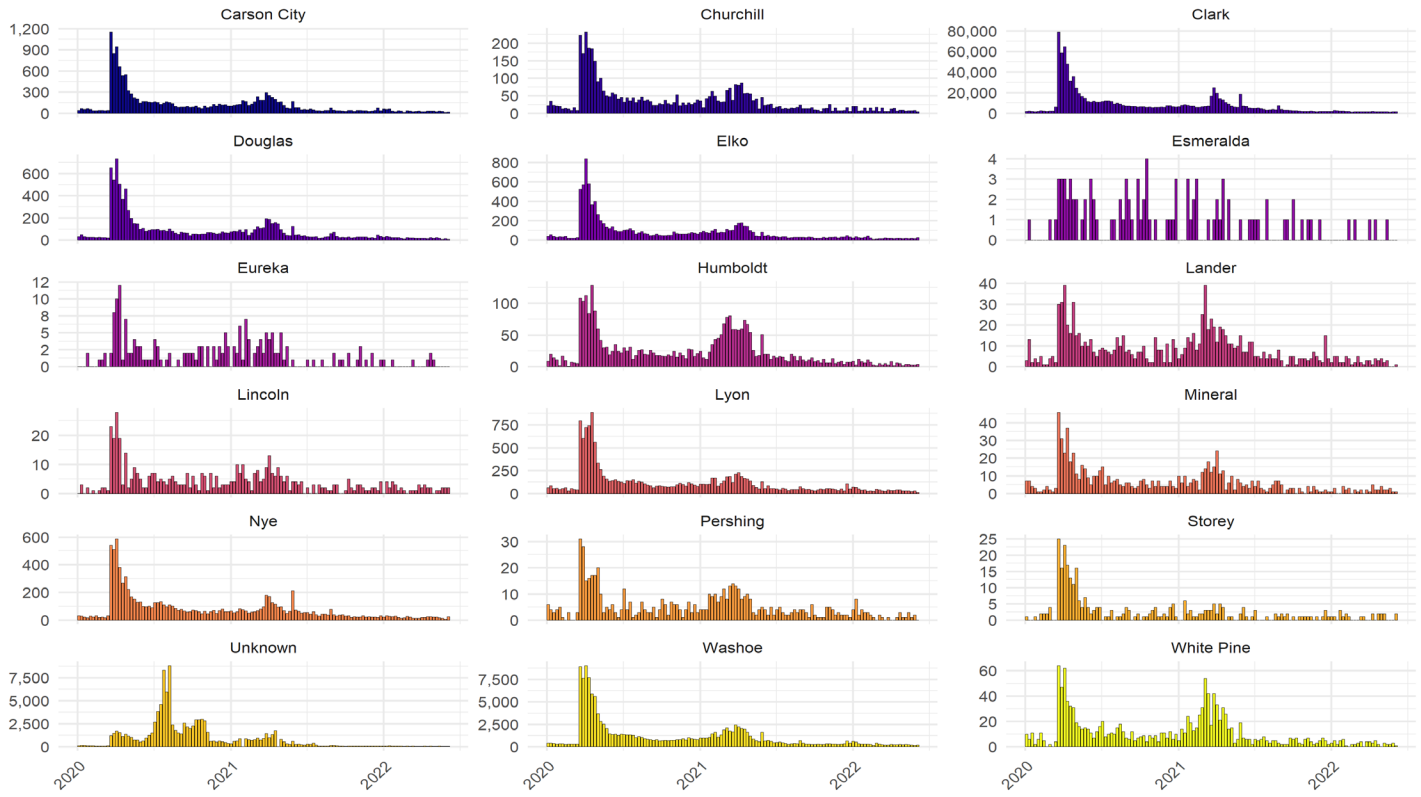
*State Specific Areas, not endorsed or published by the BLS

SA denotes seasonally adjusted data

The cities of Boulder City, Elko, Fernley, and Mesquite are state specific areas. These estimates are not endorsed or published by the BLS.

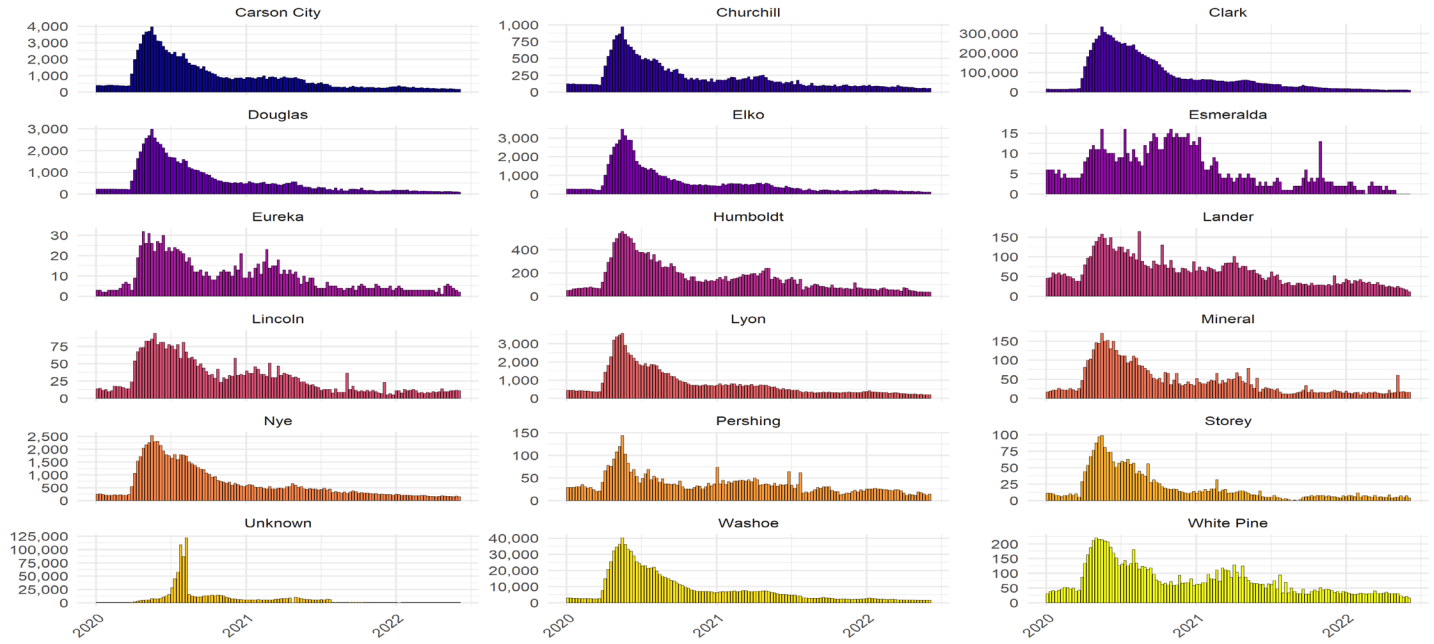
Unemployment Insurance Benefits

Initial Claims by County
weekly claim totals since January 2020



Source: DETR Internal Reporting

Continued Claims by County
weekly claim totals since January 2020



Source: DETR Internal Reporting
Figure 11

Looking to our measures of unemployment insurance activity, final payments were down across the state. First payments saw a slight increase over the month. In Clark County, for example, first payments increased by 349 up to 3,705 or an increase of 10.4 percentage points. Final payments decreased by 429 down to 1,643 or a decrease of 20.7 percentage points. Washoe County saw an increase in first payments, with first payments going up by 65 from 557 to 622. Final payments in Washoe County were down by 39 from 243 to 204. Carson City experienced a decrease in first payments moving from 65 to 55 or a decrease of 10. Final payments in Carson City were up 6, moving from 26 to 32. Statewide, the Weeks Compensated decreased by 16,843 or 17.9% over the month. Benefit Payments made decreased by approximately \$8.39 million or 18.9 percentage points.

UI Claims Activity by County

May 2024

County	First Payments	Final Payments	Weeks Compensated	Benefit Payments	Average Weekly Benefit	
Carson City	55	32	1,000	\$454,266	\$454.27	
Churchill	21	3	265	\$123,908	\$467.58	
Clark	3,705	1,643	60,800	\$28,078,380	\$461.82	
Douglas	26	4	510	\$243,580	\$477.61	
Elko	17	15	406	\$205,020	\$504.98	
Esmeralda	0	1	20	\$10,684	\$534.20	
Eureka	3	0	24	\$14,040	\$585.00	
Humboldt	11	2	214	\$103,562	\$483.93	
Lander	2	3	75	\$39,150	\$522.00	
Lincoln	1	1	36	\$18,616	\$517.11	
Lyon	71	24	1,087	\$530,844	\$488.36	
Mineral	1	0	49	\$24,355	\$497.04	
Nye	35	10	794	\$350,876	\$441.91	
Pershing	1	5	47	\$18,050	\$384.04	
Storey	1	0	8	\$4,216	\$527.00	
Unknown	123	88	2,541	\$1,303,118	\$512.84	
Washoe	622	204	9,369	\$4,513,481	\$481.75	
White Pine	3	3	92	\$42,522	\$462.20	
Statewide	—	4,698	2,038	77,337	36,078,668	—

Source: DETR Internal Reporting

Unemployment Rate Summary LAUS

Area	May 2024	April 2024	Monthly Change	May 2023	Yearly Change
US					
U.S.	3.7	3.5	0.2	3.4	0.3
U.S. SA	4.0	3.9	0.1	3.7	0.3
State					
Nevada SA	5.1	5.1	0.0	5.0	0.1
Nevada	5.4	5.0	0.4	5.0	0.4
Metropolitan Statistical Area					
Reno - Sparks MSA	4.5	4.2	0.3	4.0	0.5
Carson City MSA	4.8	4.6	0.2	4.3	0.5
Las Vegas - Paradise MSA	5.6	5.2	0.4	5.3	0.3
Combined Statistical Area					
Reno-Carson City-Fernley, Nv Combined Statistical Area	4.7	4.4	0.3	4.1	0.6
County					
Lander County	3.8	3.5	0.3	3.4	0.4
White Pine County	3.8	3.6	0.2	3.4	0.4
Elko County	4.1	3.8	0.3	3.6	0.5
Washoe County	4.5	4.2	0.3	4.0	0.5
Humboldt County	4.6	4.2	0.4	3.6	1.0
Churchill County	4.7	4.1	0.6	4.0	0.7
Storey County	4.8	4.3	0.5	4.6	0.2
Carson City	4.8	4.6	0.2	4.3	0.5
Douglas County	4.9	4.6	0.3	4.6	0.3
Eureka County	5.1	4.8	0.3	3.3	1.8
Lincoln County	5.2	4.7	0.5	4.6	0.6
Esmeralda County	5.4	5.7	-0.3	3.4	2.0
Pershing County	5.4	5.3	0.1	4.5	0.9
Clark County	5.6	5.2	0.4	5.3	0.3
Lyon County	6.3	6.0	0.3	5.5	0.8
Mineral County	6.6	6.2	0.4	7.0	-0.4
Nye County	6.8	6.5	0.3	6.5	0.3
Labor Market Area					
Elko Micropolitan Area	4.1	3.8	0.3	3.5	0.6
Winnemucca Micropolitan Area	4.6	4.2	0.4	3.6	1.0
Fallon Micropolitan Area	4.7	4.1	0.6	4.0	0.7
Gardnerville Micropolitan Area	4.9	4.6	0.3	4.6	0.3
Fernley Micropolitan Area	6.3	6.0	0.3	5.5	0.8
Pahrump Micropolitan Area	6.8	6.5	0.3	6.5	0.3
City					
Elko City*	4.2	3.8	0.4	3.5	0.7
Reno	4.6	4.2	0.4	4.1	0.5
Sparks	4.6	4.2	0.4	3.8	0.8
Mesquite*	5.0	4.7	0.3	4.3	0.7
Henderson	5.2	4.9	0.3	4.9	0.3
Boulder City*	5.3	4.9	0.4	5.1	0.2
Las Vegas	5.6	5.2	0.4	5.5	0.1
North Las Vegas	6.6	6.1	0.5	6.2	0.4
Fernley City*	6.7	6.3	0.4	5.9	0.8

* State Specific Areas, not endorsed or published by the BLS

SA denotes seasonally adjusted data

Labor Force Levels Summary LAUS

Area	May 2024	April 2024	Monthly Change	May 2023	Yearly Change
US					
U.S.	167,576,000	167,484,000	92,000	166,702,000	874,000
U.S. SA	167,732,000	167,982,000	-250,000	166,818,000	914,000
State					
Nevada	1,619,694	1,617,701	1,993	1,600,179	19,515
Nevada SA	1,616,237	1,615,430	807	1,598,110	18,127
Metropolitan Statistical Area					
Carson City MSA	26,102	26,072	30	25,995	107
Las Vegas - Paradise MSA	1,203,466	1,201,336	2,130	1,183,052	20,414
Reno - Sparks MSA	266,281	266,366	-85	266,082	199
Combined Statistical Area					
Reno-Carson City-Fernley, Nv Combined Statistical Area	338,395	338,491	-96	338,320	75
County					
Churchill County	10,949	11,005	-56	11,163	-214
Clark County	1,203,466	1,201,336	2,130	1,183,052	20,414
Douglas County	22,519	22,533	-14	22,416	103
Elko County	25,744	25,606	138	26,304	-560
Esmeralda County	448	456	-8	498	-50
Eureka County	891	919	-28	1,030	-139
Humboldt County	7,486	7,566	-80	7,866	-380
Lander County	3,120	3,141	-21	3,175	-55
Lincoln County	1,960	1,962	-2	2,040	-80
Lyon County	23,493	23,520	-27	23,827	-334
Mineral County	1,534	1,544	-10	1,517	17
Nye County	18,842	18,764	78	18,249	593
Pershing County	2,273	2,319	-46	2,411	-138
Storey County	2,159	2,153	6	2,149	10
Washoe County	264,122	264,213	-91	263,933	189
White Pine County	4,590	4,590	0	4,551	39
Carson City	26,102	26,072	30	25,995	107
Labor Market Area					
Elko Micropolitan Area	26,635	26,525	110	27,334	-699
Fallon Micropolitan Area	10,949	11,005	-56	11,163	-214
Fernley Micropolitan Area	23,493	23,520	-27	23,827	-334
Gardnerville Micropolitan Area	22,519	22,533	-14	22,416	103
Pahrump Micropolitan Area	18,842	18,764	78	18,249	593
Winnemucca Micropolitan Area	7,486	7,566	-80	7,866	-380
City					
Fernley City*	8,883	8,889	-6	9,007	-124
Boulder City*	7,955	7,936	19	7,816	139
Elko City*	10,050	9,986	64	10,258	-208
Henderson	177,422	177,164	258	174,262	3,160
Las Vegas	331,693	331,025	668	326,205	5,488
Mesquite*	8,721	8,713	8	8,533	188
North Las Vegas	125,604	125,330	274	123,279	2,325
Reno	143,777	143,800	-23	143,784	-7
Sparks	59,373	59,361	12	59,198	175

* State Specific Areas, not endorsed or published by the BLS

SA denotes seasonally adjusted data

Employed Individuals Levels Summary LAUS

Area	May 2024	April 2024	Monthly Change	May 2023	Yearly Change
US					
U.S.	161,341,000	161,590,000	-249,000	161,002,000	339,000
U.S. SA	161,083,000	161,491,000	-408,000	160,721,000	362,000
State					
Nevada	1,532,970	1,537,124	-4,154	1,519,380	13,590
Nevada SA	1,533,457	1,533,309	148	1,518,960	14,497
Metropolitan Statistical Area					
Carson City MSA	24,841	24,874	-33	24,876	-35
Las Vegas - Paradise MSA	1,136,462	1,139,152	-2,690	1,119,773	16,689
Reno - Sparks MSA	254,287	255,244	-957	255,505	-1,218
Combined Statistical Area					
Reno-Carson City-Fernley, Nv Combined Statistical Area	322,563	323,714	-1,151	324,280	-1,717
County					
Churchill County	10,438	10,550	-112	10,713	-275
Clark County	1,136,462	1,139,152	-2,690	1,119,773	16,689
Douglas County	21,421	21,490	-69	21,392	29
Elko County	24,684	24,641	43	25,369	-685
Esmeralda County	424	430	-6	481	-57
Eureka County	846	875	-29	996	-150
Humboldt County	7,141	7,245	-104	7,582	-441
Lander County	3,003	3,030	-27	3,066	-63
Lincoln County	1,859	1,869	-10	1,947	-88
Lyon County	22,014	22,106	-92	22,507	-493
Mineral County	1,433	1,448	-15	1,411	22
Nye County	17,552	17,549	3	17,060	492
Pershing County	2,151	2,196	-45	2,303	-152
Storey County	2,055	2,060	-5	2,051	4
Washoe County	252,232	253,184	-952	253,454	-1,222
White Pine County	4,416	4,424	-8	4,398	18
Carson City	24,841	24,874	-33	24,876	-35
Labor Market Area					
Elko Micropolitan Area	25,530	25,516	14	26,365	-835
Fallon Micropolitan Area	10,438	10,550	-112	10,713	-275
Fernley Micropolitan Area	22,014	22,106	-92	22,507	-493
Gardnerville Micropolitan Area	21,421	21,490	-69	21,392	29
Pahrump Micropolitan Area	17,552	17,549	3	17,060	492
Winnemucca Micropolitan Area	7,141	7,245	-104	7,582	-441
City					
Fernley City*	8,292	8,327	-35	8,478	-186
Boulder City*	7,530	7,548	-18	7,419	111
Elko City*	9,627	9,610	17	9,894	-267
Henderson	168,128	168,526	-398	165,659	2,469
Las Vegas	312,953	313,694	-741	308,358	4,595
Mesquite*	8,286	8,305	-19	8,164	122
North Las Vegas	117,345	117,623	-278	115,622	1,723
Reno	137,190	137,708	-518	137,855	-665
Sparks	56,670	56,884	-214	56,945	-275

* State Specific Areas, not endorsed or published by the BLS

SA denotes seasonally adjusted data

Unemployed Individuals Levels Summary LAUS

Area	May 2024	April 2024	Monthly Change	May 2023	Yearly Change
US					
U.S.	6,235,000	5,894,000	341,000	5,700,000	535,000
U.S. SA	6,649,000	6,492,000	157,000	6,097,000	552,000
State					
Nevada	86,724	80,577	6,147	80,799	5,925
Nevada SA	82,780	82,121	659	79,150	3,630
Metropolitan Statistical Area					
Carson City MSA	1,261	1,198	63	1,119	142
Las Vegas - Paradise MSA	67,004	62,184	4,820	63,279	3,725
Reno - Sparks MSA	11,994	11,122	872	10,577	1,417
Combined Statistical Area					
Reno-Carson City-Fernley, Nv Combined Statistical Area	15,832	14,777	1,055	14,040	1,792
County					
Churchill County	511	455	56	450	61
Clark County	67,004	62,184	4,820	63,279	3,725
Douglas County	1,098	1,043	55	1,024	74
Elko County	1,060	965	95	935	125
Esmeralda County	24	26	-2	17	7
Eureka County	45	44	1	34	11
Humboldt County	345	321	24	284	61
Lander County	117	111	6	109	8
Lincoln County	101	93	8	93	8
Lyon County	1,479	1,414	65	1,320	159
Mineral County	101	96	5	106	-5
Nye County	1,290	1,215	75	1,189	101
Pershing County	122	123	-1	108	14
Storey County	104	93	11	98	6
Washoe County	11,890	11,029	861	10,479	1,411
White Pine County	174	166	8	153	21
Carson City	1,261	1,198	63	1,119	142
Labor Market Area					
Elko Micropolitan Area	1,105	1,009	96	969	136
Fallon Micropolitan Area	511	455	56	450	61
Fernley Micropolitan Area	1,479	1,414	65	1,320	159
Gardnerville Micropolitan Area	1,098	1,043	55	1,024	74
Pahrump Micropolitan Area	1,290	1,215	75	1,189	101
Winnemucca Micropolitan Area	345	321	24	284	61
City					
Fernley City*	591	562	29	529	62
Boulder City*	425	388	37	397	28
Elko City*	423	376	47	364	59
Henderson	9,294	8,638	656	8,603	691
Las Vegas	18,740	17,331	1,409	17,847	893
Mesquite*	435	408	27	369	66
North Las Vegas	8,259	7,707	552	7,657	602
Reno	6,587	6,092	495	5,929	658
Sparks	2,703	2,477	226	2,253	450

* State Specific Areas, not endorsed or published by the BLS

SA denotes seasonally adjusted data

End Notes

Prepared by the Research and Analysis Bureau with contributions from: Jordan Ambrose, Benjamin Albrecht, Bharman Gulati, Marianne Kattenhorn, Dionny McDonnell, Dave Schmidt, Antonio Solorio, and Tim Wilcox.

Special thanks to all the R and RStudio developers that built the packages to make this possible. Packages used in this report include tidyverse, DBI, tidyquant, data.table, scales, gt, kableExtra, ggthemes, cowplot, gridExtra, RcppRoll, viridis, fiftystater, ggforce, knitr, flexdashboard, lubridate, plotly, patchwork, reshape2.

This workforce product was funded by the Workforce Information Grant awarded by the U.S. Department of Labor's Employment and Training Administration. The product was created by the recipient and does not necessarily reflect the official position of the U.S. Department of Labor. The U.S. Department of Labor makes no guarantees, warranties, or assurances of any kind, express or implied, with respect to such information, including any information on linked sites and including, but not limited to, accuracy of the information or its completeness, timeliness, usefulness, adequacy, continued availability, or ownership.

This product is copyrighted by the institution that created it. Internal use by an organization and/or personal use by an individual for non-commercial purposes is permissible. All other uses require the prior authorization of the copyright owner.